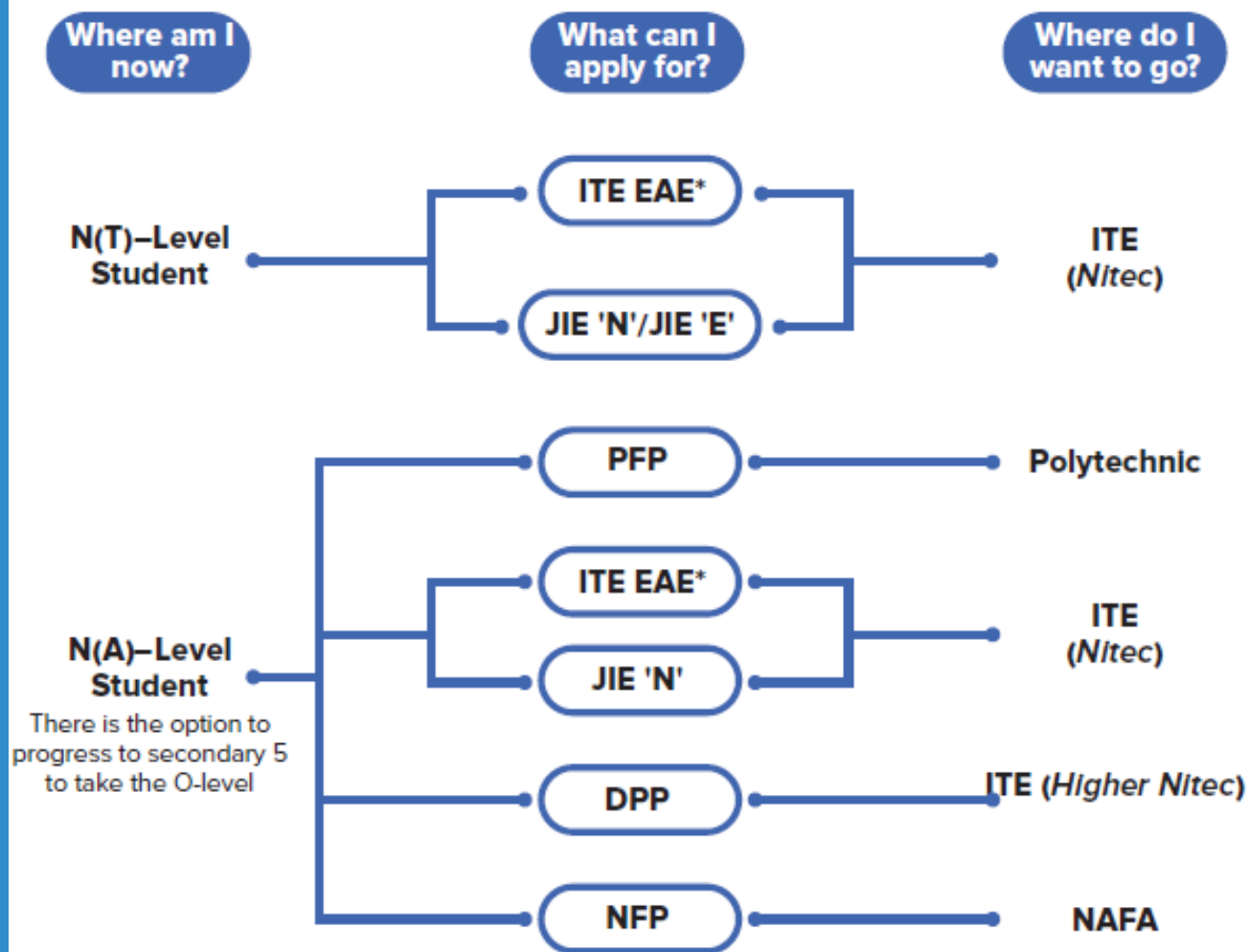


# Admission Exercises

Things to note



## Admissions Exercises for Normal Technical (N(T)) / Normal Academic (N(A)) Students



Source:

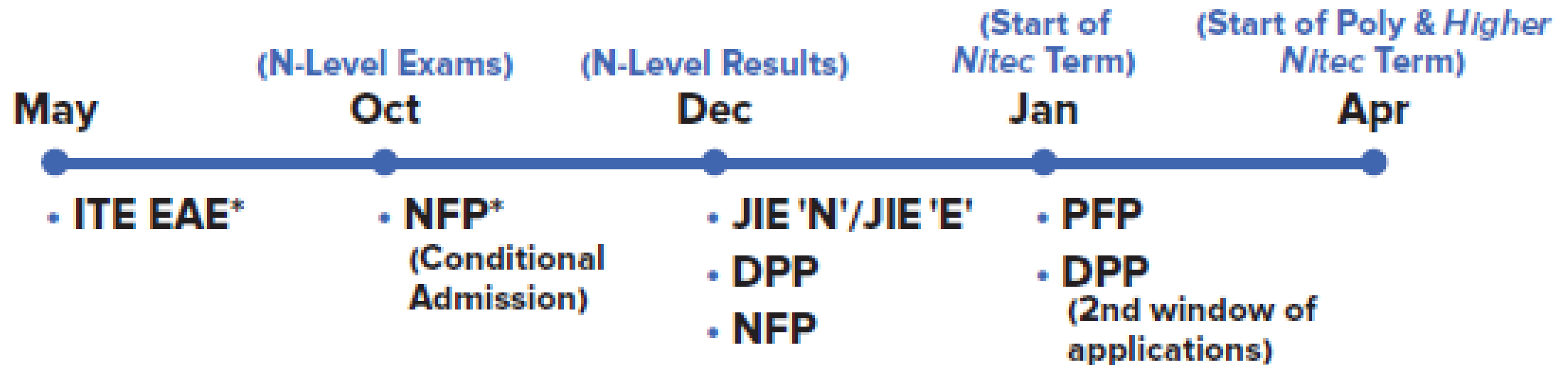


Guide to Post Sec  
Admission Ex

# Admissions Exercises Application Timeline



## When can I apply?



\*Students can apply through these admissions exercises before their examinations.

# Details of Admission Exercises (1)

## ITE EAE – ITE Early Admissions Exercise

ITE EAE is an aptitude-based admissions exercise that allows students to apply and receive conditional offers for admission to ITE based on their aptitude and interest, prior to receiving their final GCE N-Level examination results. It allows students to demonstrate their aptitudes and interests apart from academic grades, thus allowing a wider range of talents to be recognised.



[go.gov.sg/applyeae](https://go.gov.sg/applyeae)

## JIE 'N'/JIE 'E' – Joint Intake Exercise

The JIE 'N' is for GCE N(T)-/N(A)-Level holders to apply for the two-year *Nitec* course.

The JIE 'E' is for GCE N(T) students to apply for the three-year *Nitec* course with Enhanced Nitec Foundation Programme.



[go.gov.sg/applyforjie](https://go.gov.sg/applyforjie)

# Details of Admission Exercises (2)

## DPP – Direct-Entry-Scheme to Polytechnic Programme

DPP allows secondary 4N(A) students to be admitted directly into a two-year *Higher Nitec* programme at ITE without having to sit for the O-Level examinations or undergo a *Nitec* programme.

DPP students who successfully complete their *Higher Nitec* courses at ITE and attain the required qualifying Grade Point Average (GPA) scores are guaranteed a place in a polytechnic diploma course mapped to their *Higher Nitec* course.



[go.gov.sg/dpp](https://go.gov.sg/dpp)

## NFP – NAFA Foundation Programme

NFP is a one-year practice-based programme that prepares N(A)-Level holders to pursue a diploma in the creative arts.



[go.gov.sg/applynafafp](https://go.gov.sg/applynafafp)

## PFP – Polytechnic Foundation Programme

PFP is a one-year programme that offers a practice-oriented curriculum taught by polytechnic lecturers to better prepare polytechnic-bound N(A) students for entry into relevant polytechnic diploma courses. PFP students are given provisional places in diploma programmes, subject to them passing all modules in the one-year PFP.



[go.gov.sg/pfp](https://go.gov.sg/pfp)

**For Students Planning  
for Private Education**

# The 3Rs when deciding on Private Education

**Reasons**

Why are you  
furthering your  
studies?

**Readiness**

How ready are  
you to further  
your studies?

**Risks**

Do you know  
the possible  
drawbacks?

# 8 Things You Should Know Before You Enrol in A Private School

## School Registration



Ensure the school is registered with CPE. Review the school's registration period, expiry date and its overall registration track record.

## Partner Institution



Research on the partner institution conferring the diploma or degree, and whether the qualification is recognised by the industry.

## EduTrust Certification Scheme

Is the school EduTrust-certified\*? Under the scheme, private schools are assessed for their performance in areas such as school management and provision of student support services.



*\*Schools are required to obtain EduTrust certification in order to offer external degree programmes*

## School Premises

Head down to the campus ground to check the facilities and support services. Observe the study environment too.



## Fee Protection



Ask if there is any course fee protection so that you will be able to recover unconsumed course fees should the school close down.

## Beyond Course fees



Find out about the course syllabus and materials, graduation rates and employment prospects. Approach the alumni to find out what they think of the school.

## Teachers

Check if the teachers are qualified to teach the course.



## Internship

If industry attachment is included, find out which organisation you will be attached to, the period of attachment and the alternative arrangement should the attachment become unavailable. Verify the information with the organisation as well.





# Useful Resources for Students

# Speak to an ECG Counsellor

- Making informed decisions is important for successful transition from school to further education.
- Speak with your teachers and ECG Counsellor in school, besides your parents, on the possible pathways.
- MOE ECG Centre offers online or phone counselling services to GCE N-Level students from 10 – 23 December 2020 (Weekdays: 9.00 am to 5.00 pm; Saturdays: 9.00 am to 12.30 pm).
- Details on how to make an appointment can be found in the What's Next pamphlet distributed to you.

Make an online or phone counselling appointment with the ECG Centre @ MOE (Grange Road) through <https://go.gov.sg/moe-ecg-centre>.

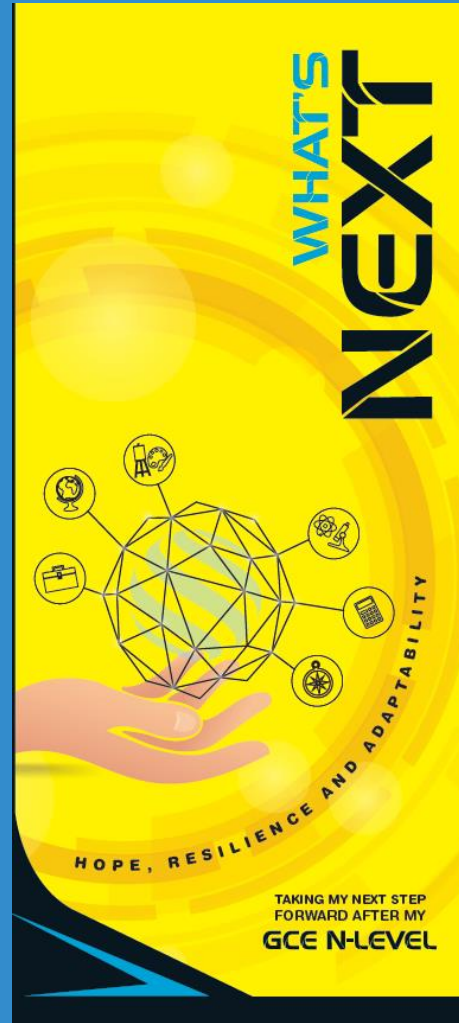


# MySkillsFuture Student Portal (Secondary)

Visit <https://go.gov.sg/MySFSec> for more information on post-GCE N-Level options



# What's Next – A Quick Guide



<https://go.gov.sg/whats-next>



# Reach out for support

- If you have any concerns or are not coping, do reach out to someone you trust and speak with them. It could be a parent, teacher, school counsellor or a friend that you can talk to.
- If you experience prolonged difficulties, the Community Health Assessment Team (CHAT) provides personalised and confidential mental health checks and face-to-face consultation for youth aged 16 to 30.
- To speak with a youth support worker, you can visit CHAT Hub at \*Scape, #05-05. You can also call 6493 6500/ 6501 or email [CHAT@mentalhealth.sg](mailto:CHAT@mentalhealth.sg).
- Alternatively, you may also call the Samaritans of Singapore's 24 hour hotline at 1800-221-4444 to speak with someone.

How am I doing? Sec/JCCI

I'm doing great!  
I'm doing pretty good.  
I'm doing okay, i guess.  
I'm starting to struggle.  
I'm having a really bad time.  
I need to reach out for support.

**Having difficult emotions during a stressful and uncertain period is normal. Keep a look out for some of these signs:**

**D** Deliberately avoiding others  
**I** Increased irritability, restlessness, agitation, stress and anxiety  
**S** Sending or posting moody messages on social media  
**T** Talking about death or dying  
**R** Reacting differently or gradually losing interest in things they used to like  
**E** Eating more than usual or having a much reduced appetite  
**S** Sleep pattern changes with difficulty falling asleep or oversleeping  
**S** Slowing down of energy levels

If you notice any of these signs in yourself or your friends,  
**have a chat with your school counsellor or teacher**  
Or contact SOS 24-hour hotline at **1800-221-4444**

  
© 2020 Guidance Bureau, Student Development Curriculum Division (SDCD), Ministry of Education, Singapore. No part of this final product may be reproduced or transmitted in any form or by any means, electronic or mechanical, including photocopying, recording or any other information storage and retrieval system, without written permission from SDGD, MOE.

<https://go.gov.sg/wellbeingsecjcci>



Ministry of Education  
SINGAPORE