

# GCE 'O' LEVEL MATTERS

11 January 2021

# Key Reminders by Year Head

# CLASS OF 2020



# WELCOME BACK!

# CELEBRATE EFFORTS!


The O-Level is a culmination of years of hard work and perseverance.

Let's celebrate our efforts regardless of the results.

Let's mark the end of the academic year by reflecting together on all our previous achievements in school and the challenges we h





A photograph of a dirt path winding through a dense forest. Sunlight filters through the trees, creating a warm, golden glow. The path is covered in fallen leaves and leads into the distance. A semi-transparent dark rectangle is overlaid on the center of the image, containing white text.

Success is not final,  
Failure is not fatal;  
It is the courage to  
continue that counts.

Winston Churchill

# THINK OPPORTUNITIES!

- As you await your GCE O-Level results, there are 3 possibilities:
  - ☐ You are happy that your results meet your expectations,
  - ☐ You are overjoyed that your results exceed your expectations, or
  - ☐ You are worried/upset because your results fall short of your expectations.

Remember that **everyone's learning journey is different**  
but **we can each have a fulfilling outcome!**

*Many pathways and opportunities!*



# Managing Your Emotions and Making Your Decisions

When you receive your results, you may feel overwhelmed by emotions. Managing these emotions well will allow you to stay calm and make rational decisions.



## STOP

Stop any unhelpful thoughts or actions that would make you more upset. Inhale deeply and exhale slowly using 10 counts as you relax your muscles. Acknowledge your emotions.

## THINK

Think through the different options that are available for you. Keep things in perspective. Remember that the O-Level is just one part of your life journey and not the destination.

## DO

Approach a trusted adult and seek his/her help. Have a conversation with this person about what would be best for you. Make a decision based on your options and take action.

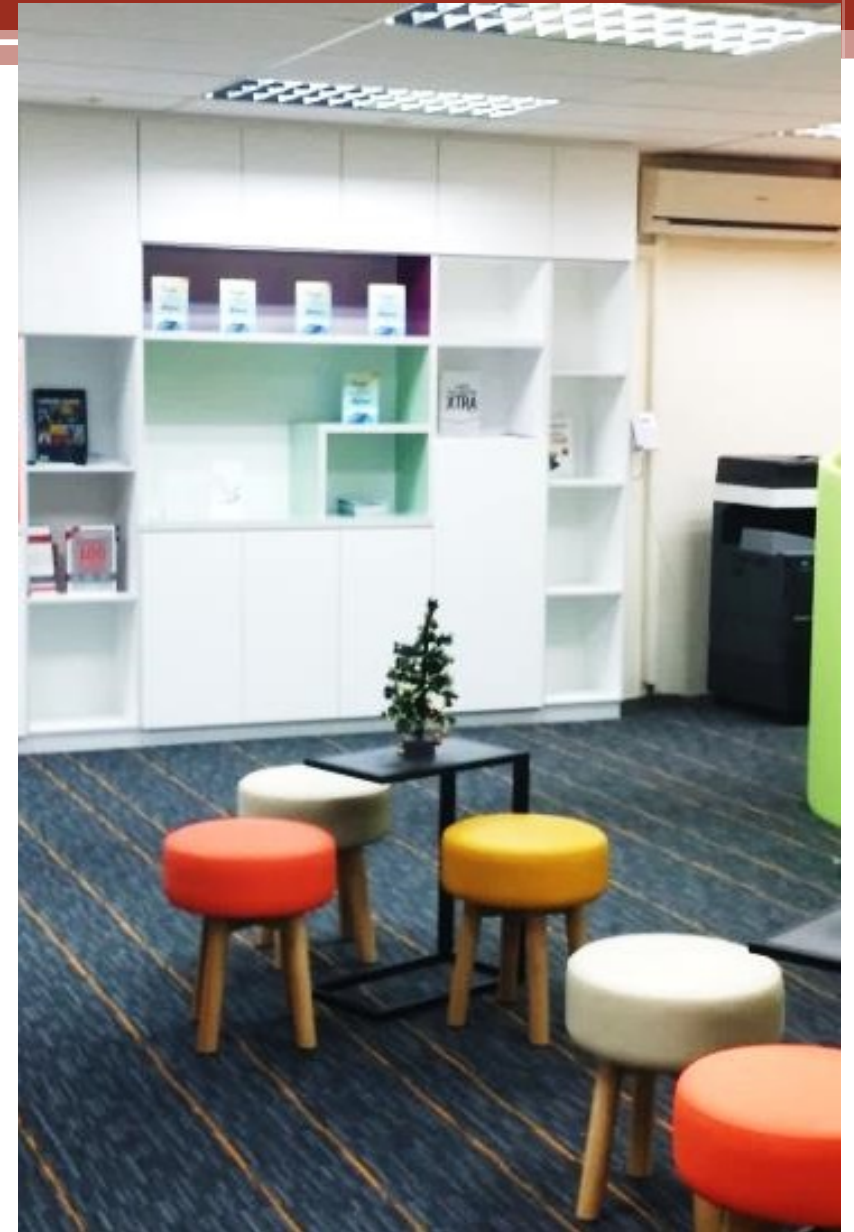
# Useful Resources for Students



# Speak to an ECG Counsellor

- Making informed decisions is important for successful transition from school to further education.
- Speak with your teachers and ECG Counsellor in schools, besides your parents, on the possible pathways.
- MOE ECG Centre offers online or phone counselling services to GCE O-Level students from 6 – 20 January 2021 (Weekdays: 9.00 am to 5.00 pm; Saturdays: 9.00 am to 12.30 pm).
- Details on how to make an appointment can be found in the What's Next pamphlet distributed to you.

Make an online or phone counselling appointment with the ECG Centre @ MOE (Grange Road) through <https://go.gov.sg/moe-ecg-centre>.



# O-LEVEL ONLINE ECG COUNSELLING

---

12 JAN(TUE) TO 15 JAN(FRI)

---

Supported by :  
Ms Samantha Woo  
ECG Counsellor



To book an online ECG Counselling Session for  
12 Jan (Tue) to 15 Jan (Fri)

11

1. Scan the QR Code below or

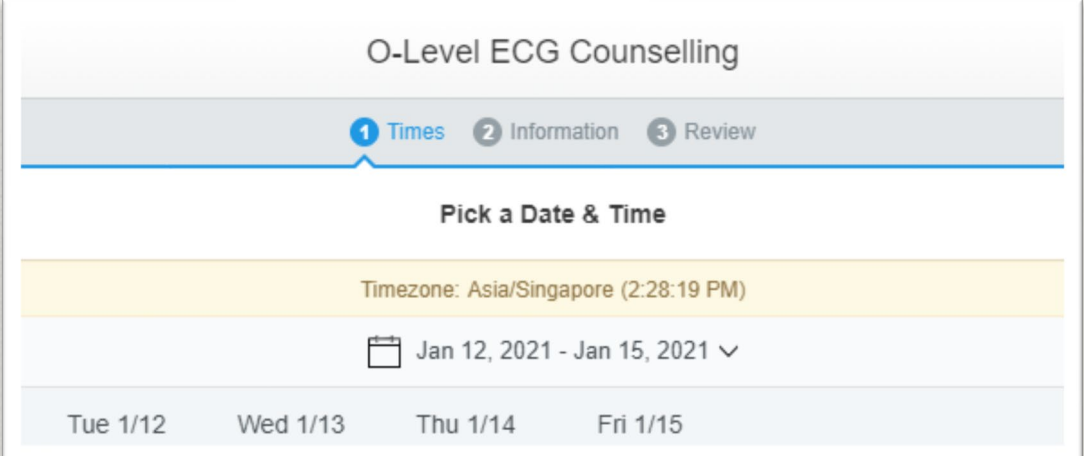


<https://go.gov.sg/ecg-bookappt-gceo>

<https://go.gov.sg/ecg-bookappt-gceo>

## To book an online ECG Counselling Session for 12 Jan (Tue) to 15 Jan (Fri)

- 
2. **Select an appointment date and time.**  
Each session is about 40mins.



O-Level ECG Counselling

1 Times 2 Information 3 Review

Pick a Date & Time

Timezone: Asia/Singapore (2:28:19 PM)

Jan 12, 2021 - Jan 15, 2021 ▼

Tue 1/12    Wed 1/13    Thu 1/14    Fri 1/15

3. **Provide the required information and complete the form.**



O-Level ECG Counselling

1 Times 2 Information 3 Review

Provide your information

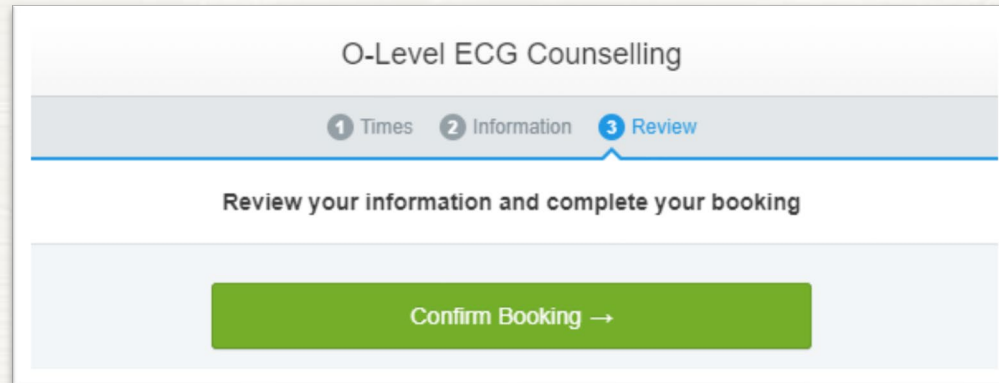
Email \*

Full Name \*

To book an online ECG Counselling Session for  
12 Jan (Tue) to 15 Jan (Fri)

13

4. Check your information and click “Confirm Booking”.



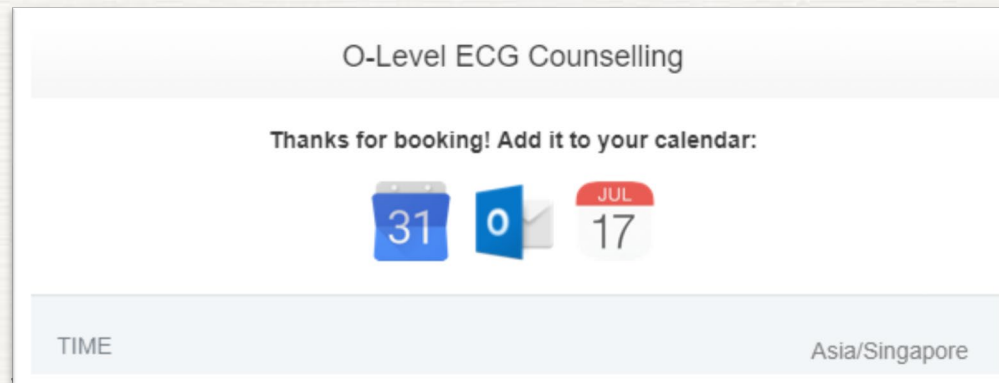
O-Level ECG Counselling

1 Times 2 Information 3 Review

Review your information and complete your booking

Confirm Booking →

5. You will see the message below after you have confirmed your booking.



O-Level ECG Counselling

Thanks for booking! Add it to your calendar:


31 0 17 JUL

TIME Asia/Singapore

6. You will also receive a confirmation email for the appointment. If not, please check you spam or junk email.



## Things to note

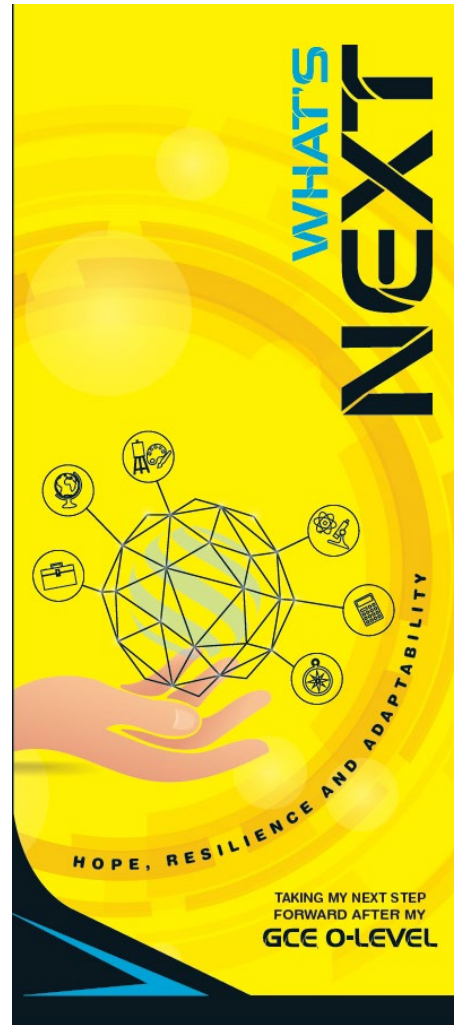
- 
- a. **Zoom details** will be sent to you **before** the session.
    - It will be sent to you via **WhatsApp**
    - **IMPORTANT**: To be admitted to the Zoom session, please indicate your name and school in the following format :  
“<school short form> - <name>” e.g. MJR - Jay Ong
  - b. **Have your results slip, Form A and JAE/JIE “O” booklet ready.**

# MySkillsFuture Student Portal (Secondary)

Visit <https://go.gov.sg/MySFSec> for more information on post-GCE O-Level options.



# What's Next – A Quick Guide



<https://go.gov.sg/whats-next>

# Reach out for support

- If you have any concerns or are not coping, do reach out to someone you trust and speak with them. It could be a parent, teacher, school counsellor or a friend that you can talk to.
- If you experience prolonged difficulties, the Community Health Assessment Team (CHAT) provides personalised and confidential mental health checks and face-to-face consultation for youth aged 16 to 30.
- To speak with a youth support worker, you can visit CHAT Hub at \*Scape, #05-05. You can also call 6493 6500/ 6501 or email [CHAT@mentalhealth.sg](mailto:CHAT@mentalhealth.sg).
- Alternatively, you may also call the Samaritans of Singapore's 24 hour hotline at 1800-221-4444 to speak with someone.



**Having difficult emotions during a stressful and uncertain period is normal. Keep a look out for some of these signs:**

- D** Deliberately avoiding others
- I** Increased irritability, restlessness, agitation, stress and anxiety
- S** Sending or posting moody messages on social media
- T** Talking about death or dying
- R** Reacting differently or gradually losing interest in things they used to like
- E** Eating more than usual or having a much reduced appetite
- S** Sleep pattern changes with difficulty falling asleep or oversleeping
- S** Slowing down of energy levels

If you notice any of these signs in yourself or your friends,  
**have a chat with your school counsellor or teacher**  
Or contact SOS 24-hour hotline at **1800-221-4444**



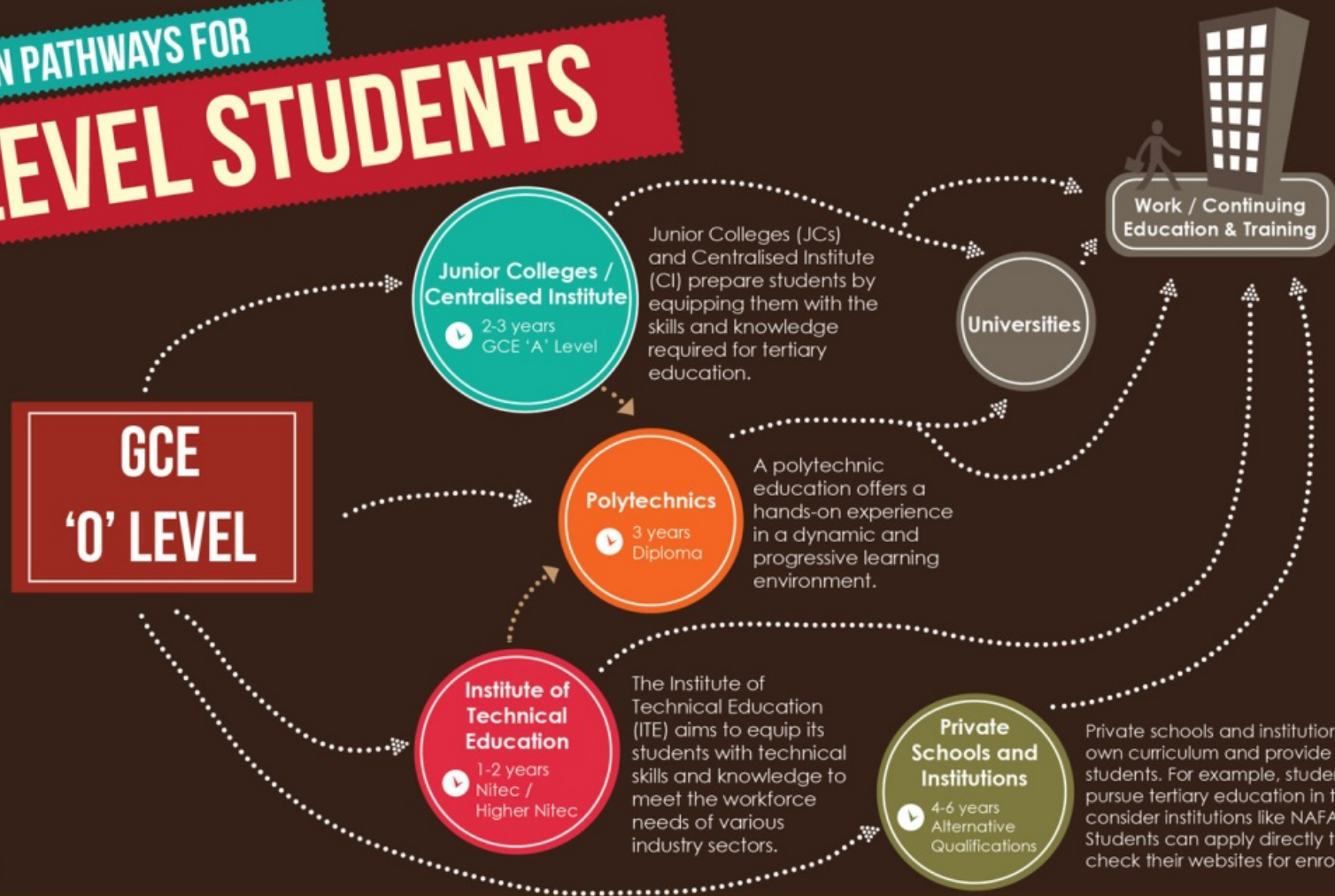
© 2020 Guidelines Review, Student Development Curriculum Division (SDCD), Ministry of Education, Singapore. No part of this final product may be reproduced or transmitted in any form or by any means, electronic or mechanical, including photocopying, recording or any other information storage and retrieval system, without written permission from SDCC, MOE.

Source: <https://go.gov.sg/wellbeingsecjcci>

# Education Pathways by VP



# EDUCATION PATHWAYS FOR 'O' LEVEL STUDENTS



## HOW TO APPLY



**JUNIOR COLLEGES /  
CENTRALISED  
INSTITUTE**

**L1R5  
AGGREGATE**

**20 OR LESS  
for JCs**

Students may apply through:

\* **Joint Admission Exercise (JAE)**; or

\* **Direct School Admission-JC (DSA-JC) Exercise** for those with greater range of student achievements and talents.



**POLYTECHNICS**

## HOW TO APPLY

Students may apply through:

\* **Joint Admission Exercise (JAE)**;

\* **Joint Polytechnic Special Admissions Exercise (JPSAE)** for students with special aptitude and talents; or

\* **Direct Polytechnic Admission (DPA) Exercise** which gives the polytechnic the flexibility to select students based on criteria other than exam results.



**INSTITUTE OF  
TECHNICAL  
EDUCATION**

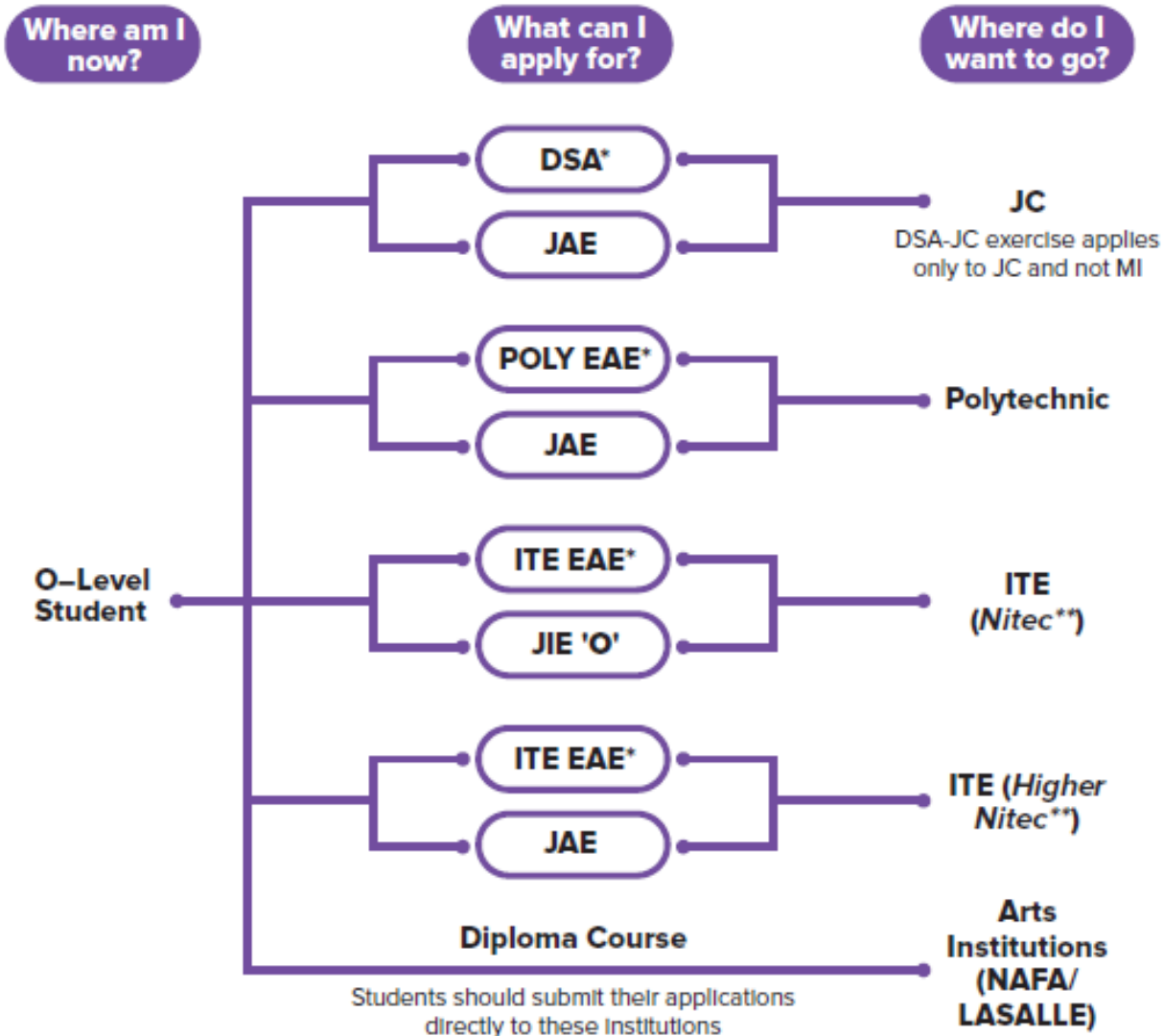
## HOW TO APPLY

\* For **Nitec** courses, students can participate in the **Joint Intake Exercises (JIE)** conducted by ITE.

\* For **Higher Nitec** courses, students can take part in the **Joint Admission Exercise (JAE)**.



## Admissions Exercises for Ordinary (O) Level Students



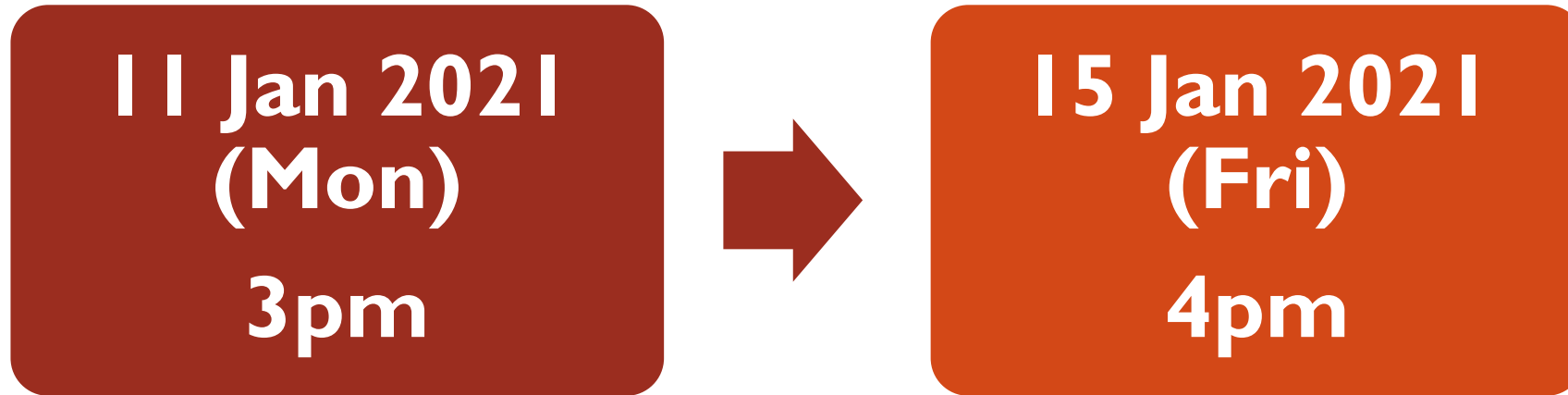
Source:



Guide to Post Sec  
Admission Ex

# JOINT ADMISSIONS EXERCISE (JAE) REGISTRATION

(FOR ADMISSION TO JC/MI, POLY, ITE HIGHER NITEC)



- Submit your choice of course online through the JAE Internet System (JAE-IS) at [www.moe.gov.sg/jae](http://www.moe.gov.sg/jae)
- Please access the JAE-IS using your SingPass or JAE PIN found in Form A.
  - JAE PIN will **not** be replaced if lost
- For more info: <https://beta.moe.gov.sg/post-secondary/admissions/jae/>

# JAE REGISTRATION

## POSTING RESULTS

- Posting results will be released on **28 Jan 2021** (Thu) through
  - a) JAE –IS (JAE website [www.moe.gov.sg/jae](http://www.moe.gov.sg/jae))
  - b) SMS (if you provide a local mobile number in your application)
- If posted to JC/MI, you **must** report on **29 Jan (Fri)** (in your secondary school uniform), else you will forfeit your place
- If posted to poly/ ITE, you will receive a package or letter with enrolment instructions

# JAE REGISTRATION

## JUNIOR COLLEGES /MILLENIA INSTITUTE

- JCs/ MI offer a variety of subjects and different subject combinations.
  - Set own school-based criteria for subjects offered
  - Posting to an Arts, Science or Commerce course does not guarantee that you will be able to offer your preferred subject combinations
  - Please check the website of the respective JCs/ MI for more details on the subject combinations offered and school-based criteria for subjects offered
- JCs/ MI also offer various special programmes and scholarships, e.g. Chinese/ Malay/ Tamil Language Elective Programme. Please refer to Annex C (pg.92) of JAE Booklet for more info.
- Appeals: please approach the JC/MI directly to appeal, after release of posting results. You must meet minimum entry requirements for admission to JC/MI, as well as C.O.P. of that JC/MI in 2021 JAE.



## CHINESE LANGUAGE ELECTIVE PROGRAMME

In the GCE O level examination, students must obtain at least:

- ☐ Grade B3 in Higher Chinese (HCL) or
- ☐ Grade B4 in HCL and B3 in Literature in Chinese (Full or Elective) or
- ☐ Grade A2 in Chinese (CL)

	Date	LEP School	Time	Link
CLEP	12 Jan 2021 (Tuesday)	Dunman High School	1.00pm – 2.00pm	Session Link: <a href="https://moe-singapore.zoom.us/j/83223774285">https://moe-singapore.zoom.us/j/83223774285</a> Meeting ID: 832 2377 4285 Passcode: 995185
	12 Jan 2021 (Tuesday)	Jurong Pioneer Junior College	1.00pm – 1.45pm	Registration Link: <a href="https://go.gov.sg/jpic-eopenhouse-registration">https://go.gov.sg/jpic-eopenhouse-registration</a>
	12 Jan 2021 (Tuesday)	Hwa Chong Institution (College)	3.45pm – 4.30pm	Registration Link: <a href="https://www.hcunite.com/signups-for-live-sessions">https://www.hcunite.com/signups-for-live-sessions</a>
	13 Jan 2021 (Wednesday)	Nanyang Junior College	2.00pm – 3.00pm	Session Link: <a href="https://moe-singapore.zoom.us/j/86191033018">https://moe-singapore.zoom.us/j/86191033018</a> Meeting ID: 861 9103 3018 Passcode: yestonyjc
	14 Jan 2021 (Thursday)	Temasek Junior College	10.00am	Session Link: <a href="https://moe-singapore.zoom.us/j/87461525927">https://moe-singapore.zoom.us/j/87461525927</a> Meeting ID: 874 6152 5927 Passcode: TJC2021

# MALAY LANGUAGE ELECTIVE PROGRAMME

In the GCE O level examination, students must obtain at least:

- ☐ Grade B3 in Higher Malay (HML) or
- ☐ Grade B4 in HML and B3 in Literature in Malay (Full or Elective) or
- ☐ Grade A2 in Malay Language (ML)

LEP	Date	LEP School	Time	Link
MLEP	12 Jan 2021 (Tuesday)	Jurong Pioneer Junior College	1.00pm – 1.45pm	Registration Link: <a href="https://go.gov.sg/jpic-eopenhouse-registration">https://go.gov.sg/jpic-eopenhouse-registration</a>
	12 Jan 2021 (Tuesday)	National Junior College	2.15pm – 3.00pm	Session Link: <a href="https://moe-singapore.zoom.us/j/5657513164">https://moe-singapore.zoom.us/j/5657513164</a> Meeting ID: 565 751 3164 Passcode: 350665
	12 Jan 2021 (Tuesday)	Yishun Innova Junior College	3.30pm – 4.00pm	e-Open House Link: <a href="https://yijc.moe.edu.sg/e-open-house">https://yijc.moe.edu.sg/e-open-house</a>
	13 Jan 2021 (Wednesday)	Tampines Meridian Junior College	10.30am – 11.30am	e-Open House Link: <a href="https://sites.google.com/tmjc.edu.sg/e-openhouse2021/tm-enrich/instructional-programmes/moe-programme-electives/malay-language-elective-programme">https://sites.google.com/tmjc.edu.sg/e-openhouse2021/tm-enrich/instructional-programmes/moe-programme-electives/malay-language-elective-programme</a>  Q & A Live Webinar Link: <a href="https://go.gov.sg/tmoh21qna">https://go.gov.sg/tmoh21qna</a>
	-	Raffles Institution	-	School Website Link: <a href="https://ri.edu.sg">https://ri.edu.sg</a>

# TAMIL LANGUAGE ELECTIVE PROGRAMME

In the GCE O level examination, students must obtain at least:

- ☐ Grade B3 in Higher Tamil (HTL) or
- ☐ Grade B4 in HTL and B3 in Literature in Tamil (Full or Elective) or
- ☐ Grade A2 in Tamil Language (TL)

LEP	Date	LEP School	Time	Link
TLEP	12 Jan 2021 (Tuesday)	Anderson Serangoon Junior College	Session 1: 9.45am – 11.30am Session 2: 1.45pm – 3.30pm	<p>e-Open House Link:  <a href="http://asrjc.moe.edu.sg/e-open-house-2021">http://asrjc.moe.edu.sg/e-open-house-2021</a></p> <p>Registration Link:  <a href="https://form.gov.sg/#!/5fdc7836d99cdf00111dc667">https://form.gov.sg/#!/5fdc7836d99cdf00111dc667</a></p>
	12 Jan 2021 (Tuesday)	National Junior College	3.15pm – 4.00pm	<p>Session Link:  <a href="https://moe-singapore.zoom.us/j/7175004397?pwd=VDJ4M0RFNHptQjNQaINUWEwlaXFrUT09">https://moe-singapore.zoom.us/j/7175004397?pwd=VDJ4M0RFNHptQjNQaINUWEwlaXFrUT09</a></p> <p>Meeting ID: 717 500 4397            Passcode: 156494</p>

## JC/MI Open Houses



## Nanyang JC e-Open House 2021 (The Covid-19 Edition)

- Showcase Videos by CCAs & SIGs
- \*Online Chit Chat Sessions with Our Teachers (Limited slots available)

***\*Registration for these sessions begins  
11 Jan, 4pm.***

### Uniquely NYJC

- 4 Dress Down Days
- 8.30am start time
- Flexible subject combinations
- Empowered students, dedicated and caring staff

**Find out more on:**

**[www.nanyangjc.moe.edu.sg](http://www.nanyangjc.moe.edu.sg)**

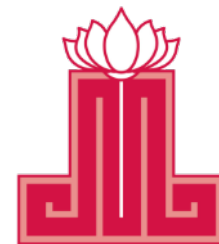




# OH EUNOIA!

ONLINE OPEN HOUSE

[oheunoia.com](http://oheunoia.com)



智行慈願

# DIRECT SCHOOL ADMISSION – JUNIOR COLLEGES (DSA-JC)

- If you had accepted offers through the 2020 DSA-JC exercise, you are deemed to be admitted to your chosen JC if your GCE O-Level examination results have met the eligibility criteria for admission to JC.
- Students admitted to a JC through DSA-JC will not be eligible to participate in the JAE.
- Students who do not meet the JC admission criteria may take part in JAE.
- More info at <https://beta.moe.gov.sg/post-secondary/admissions/dsa/>

# JAE REGISTRATION POLYTECHNIC FOUNDATION PROGRAMME (PFP)

- 2020 4NA students eligible for PFP will receive Form P
- Application for PFP: **11 Jan, 2pm to 15 Jan, 4pm**
- Results will be released on **Tue, 19 Jan, 2pm** through the PFP website
- Students to indicate accept, reject or appeal by **Thu, 21 Jan, 4pm**
- Appeal outcomes will be released 27 Jan, 4pm, and acceptance required by 29 Jan, 4pm
- Last day of school is Fri, 29 Jan 2021.
- More info at <https://pfp.polytechnic.edu.sg/PFP/index.html>

# JAE REGISTRATION

## DIRECT-ENTRY-SCHEME TO POLYTECHNIC PROGRAMME (DPP)

- Final application for DPP from **11 Jan 2pm to 15 Jan 11.59pm**
- Results will be released **Tue, 19 Jan, 9am** through DPP application portal
- Students to accept or reject from **Tue, 19 Jan, 9am to end Thur, 21 Jan**
- Report to ITE on Thu, 21 Jan upon acceptance of DPP course offer
- More info at <http://www.ite.edu.sg/apply-now/dpp/>
- Students in DPP offered PFP option:
  - Apply to ITE to withdraw from DPP course
  - Accept PFP offer

# POLY OPEN HOUSES



JOINT  
ADMISSIONS  
EXERCISE

VIRTUAL  
OPEN  
HOUSE

OUR  
SCHOOLS

POLYTECHNIC  
FOUNDATION  
PROGRAMME

JOIN OUR  
SQUAD

STUDENT  
LIFE

FINANCIAL ASSISTANCE  
SCHEMES AND SCHOLARSHIPS

SUCCESS  
STORIES

VISIT TP  
MAIN SITE

HOME / VIRTUAL OPEN HOUSE LOBBY





setting you apart

NANYANG  
POLYTECHNIC

#becausewecan

Joint Admissions Exercise

ENTER



# EARLY ADMISSIONS EXERCISE (EAE)

- If you had accepted conditional offers to a polytechnic course through EAE, you would have your EAE offers confirmed if you meet the following criteria:
  - a) A net ELR2B2 score of 26 points or better for the GCE O-Level examinations; and
  - b) Minimum Entry Requirements for the respective polytechnic course.
- Students who do not meet the above criteria may take part in JAE.
- More info at <https://eae.polytechnic.edu.sg>

# JAE REGISTRATION

## APPEALS FOR POLY/ ITE

- To appeal for a place in a Polytechnic or ITE Higher Nitec course, please do so online through the combined Polytechnic and ITE Higher Nitec appeals portal at <https://jaeappeal.edu.sg> within 4 working days upon the official release of the JAE posting results.
- Students who were not posted to any course during the JAE are also **strongly encouraged** to submit an appeal through this portal.
- Results of the appeal will be released through this portal.

# JAE REGISTRATION

## APPEALS FOR POLY/ ITE

- At the end of the combined appeals period, students who had not received any Polytechnic or ITE Higher Nitec posting to a course of their choice during the JAE Posting or JAE Appeals will be offered a place in an alternative Polytechnic or ITE course
- This is to provide students viable options to continue their education
- Students are **strongly encouraged to take up the alternative offer first** and appeal to the institutions directly for another course or institution

# IMPORTANT REMINDERS

- 1) **Consider course choices wisely** – choose courses that are comparable to your aggregate scores for better fit and better chances of admission.

Institution of choice	Aggregate Scores
Junior College	L1R5
Millenia Institute	L1R4
Polytechnic courses	ELR2B2
ITE	ELB4/ ELR1B3/ ELR2B2

- 2) **Make full use of 12 choices** and indicate at least 2-3 courses where your aggregate scores are much better than the previous year's course cut off points.



# COMPUTER FACILITIES FOR STUDENTS' USE FOR JAE REGISTRATION

- Computer facilities would be made available during these periods

Date	Time
11 Jan 2021	3pm – 4pm
12 Jan 2021 to 15 Jan 2021	9am – 4pm

- Students who wish to use these facilities would need to make a booking through a google form. You will receive details and instructions in your manjusrisec email.
- You will be able loan a laptop from the General Office on the date and time booked, and will complete the JAE registration at the marble tables outside General Office.

# CHECKING OF RESULT SLIPS

- Please check that your personal particulars (such as Statutory Name and Hanyu Pinyin name) are printed correctly on your result slips as the same personal particulars will be printed on your certificates.
- If there is any error, please highlight to your respective form teachers or GO by today, 11 Jan (5pm)
- Candidates may request for a re-print of their certificate only if their names were printed wrongly due to misspelling. There will be an amendment fee of \$50 for each certificate that requires a re-print.

# APPEAL TO REVIEW RESULTS

- Students who wish to appeal to review their results are to see VP Ms Chia at the GO on 12 or 13 Jan between 9am – 11am
- Appeal fees of \$112.35 per subject and no report will be provided
- Outcome released in February 2021

## RETENTION

- Students who wish to repeat 4E5N, please see VP Ms Chia at the General Office for the “Request to Repeat Form” on 12 or 13 Jan, 9 – 11am
  - Form is to be returned to General Office by 14 Jan (Thu).
- **You would be asked to meet School Leaders at a later date.**

# EDUCATION AND CAREER GUIDANCE

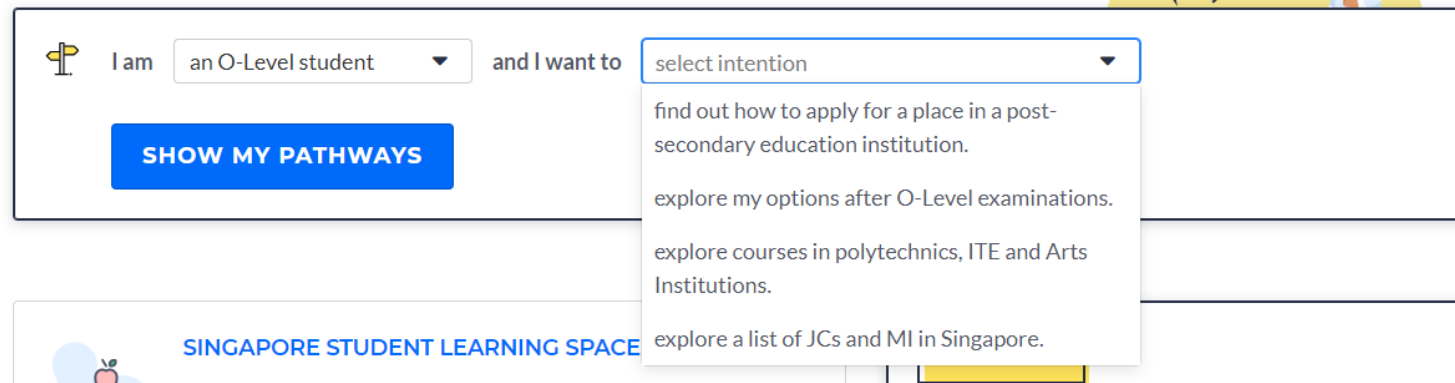

<https://beta.moe.gov.sg/post-secondary/>

## Post-secondary

*Post-secondary education comprises the paths you can take after you complete your secondary school education. Learn about the choices available for you to pursue your next phase of learning based on your interests and strengths.*

## Get started on your pathway options

Not sure where to begin? Use our checker to find pathway options that meet your interests and strengths.



The screenshot shows the 'Post-secondary' section of the Singapore Student Learning Space (SLS). It features a form with two dropdown menus: 'I am' (set to 'an O-Level student') and 'and I want to' (set to 'select intention'). A blue button labeled 'SHOW MY PATHWAYS' is positioned below the first dropdown. The 'and I want to' dropdown is open, displaying four options: 'find out how to apply for a place in a post-secondary education institution.', 'explore my options after O-Level examinations.', 'explore courses in polytechnics, ITE and Arts Institutions.', and 'explore a list of JCs and MI in Singapore.' The SLS logo and name are visible at the bottom left of the interface.

