



Full Subject-Based Banding (Full SBB)

Sec 1 Parents (MTS 2026)

What is Full Subject-Based Banding?

- Full Subject-Based Banding (Full SBB) is part of MOE's ongoing efforts to **nurture the joy of learning** and **develop multiple pathways** to cater to the different strengths and interests of our students.
- With Full SBB, we are moving towards a secondary school education where **students learn each subject at the level that best caters to their overall strengths, interests and learning needs**.

Rationale of Full SBB

Full SBB aims for students to:



Have **greater ownership of their learning** according to their strengths, interests, abilities, talents and learning needs



Develop a **growth mindset and an intrinsic motivation** to learn for life

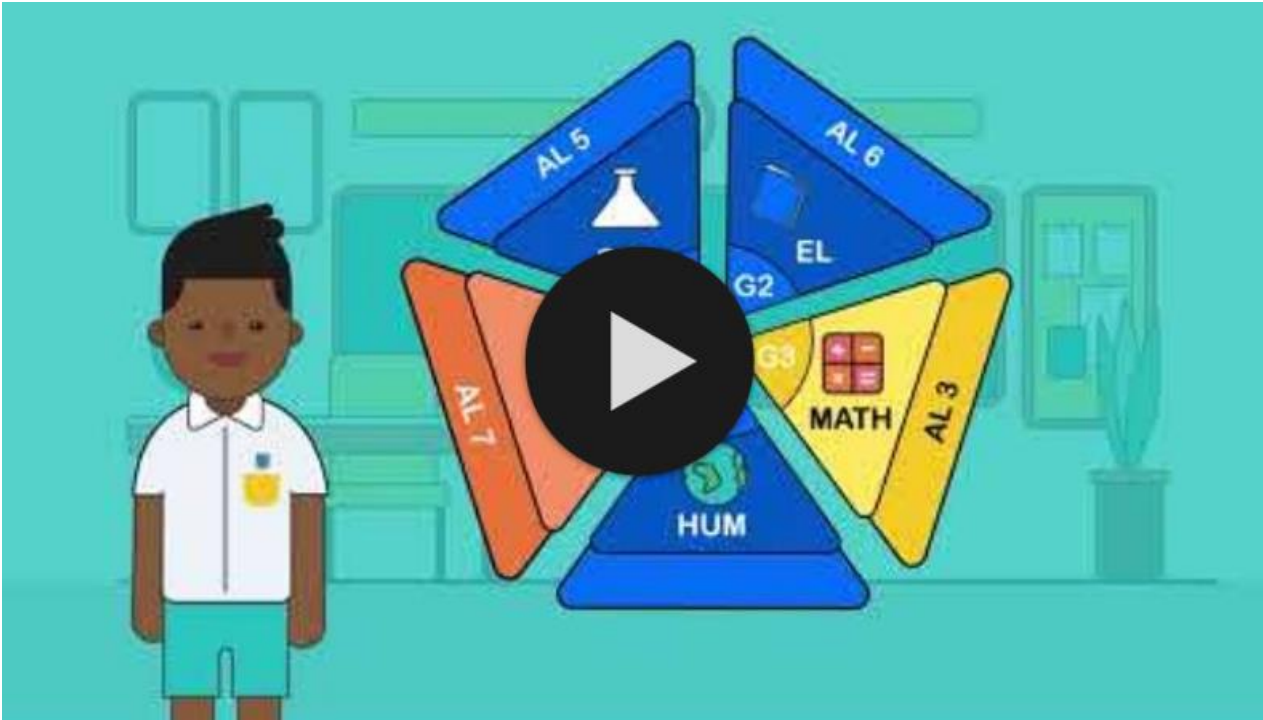


Have **more opportunities to interact with friends** of different backgrounds, strengths, interests, abilities and talents



Have **more options for post-secondary pathways;** while ensuring they have strong fundamentals and can thrive in their chosen pathway

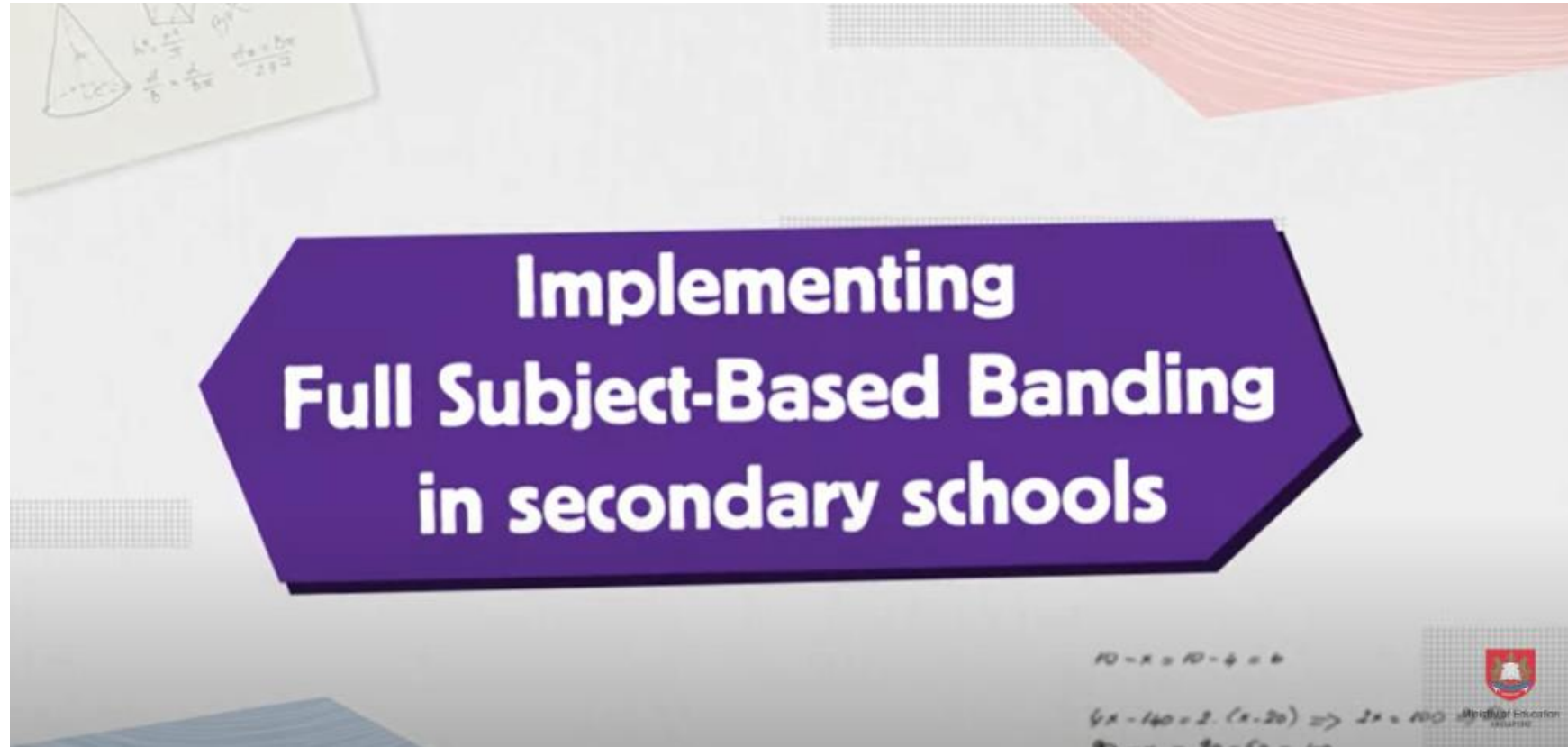
Explainer Video: Secondary school experience under Full SBB



YouTube link

<https://go.gov.sg/moe-fsbb-explainer>

What does Full SBB mean for my child? (Video)

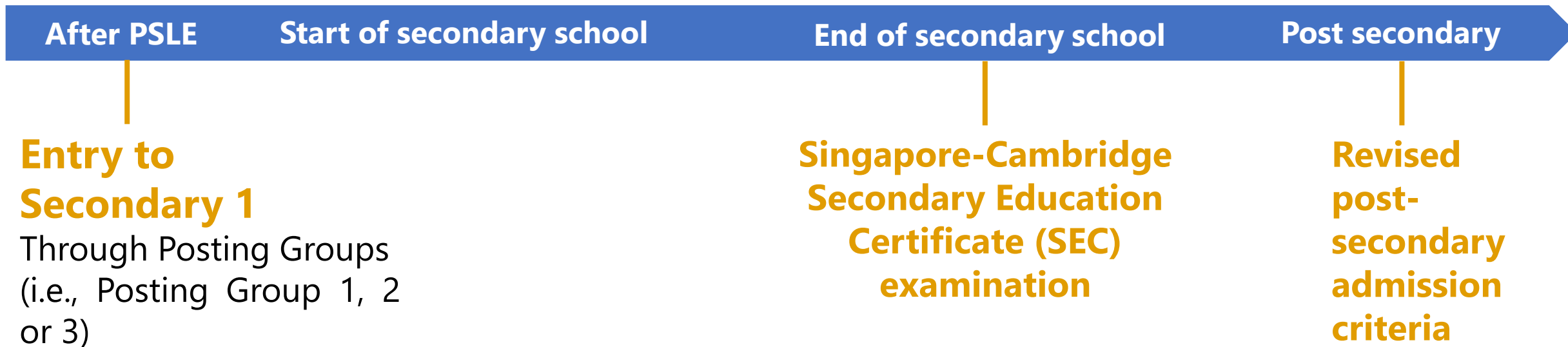


<https://go.gov.sg/ansot-fullsbbsummary>

Secondary school experience under Full SBB

Secondary school experience

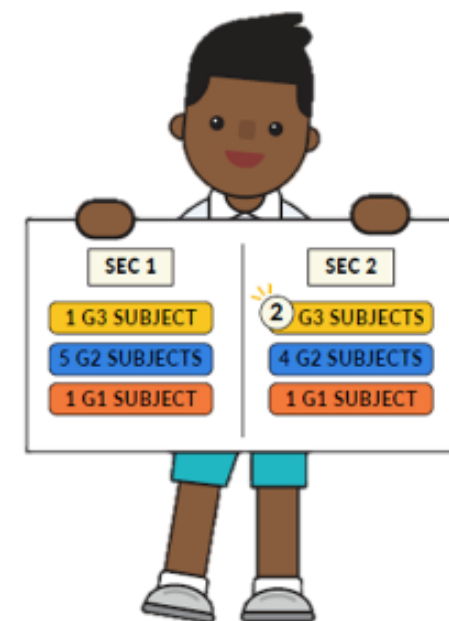
1. Mixed form classes upon entering secondary school
2. Common curriculum subjects at lower secondary
3. Subjects to be offered at G1, G2 or G3, mapped from the standards of the N(T), N(A) and Express respectively
4. Greater flexibility to offer subjects at various subject levels
5. Shift away from stream-based subject offerings



Subject Levels under Full SBB

- Students are required to take compulsory subjects at G1, G2 or G3.
- Subject level at the start of Secondary 1 is based on their PSLE Score and indicated by Posting Groups.

PSLE Score	Posting Groups	Indicative level for most subjects at start of Secondary 1
4 – 20	PG3	G3
21 - 22	PG2 or PG3	G2 or G3
23 - 24	PG2	G2
25	PG1 or PG2	G1 or G2
26 – 30 (with AL 7 or better in EL and MA)	PG1	G1



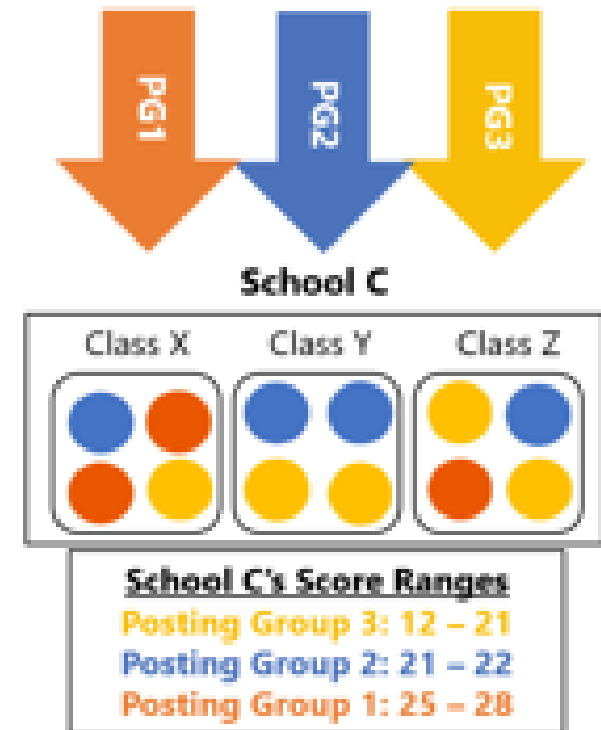
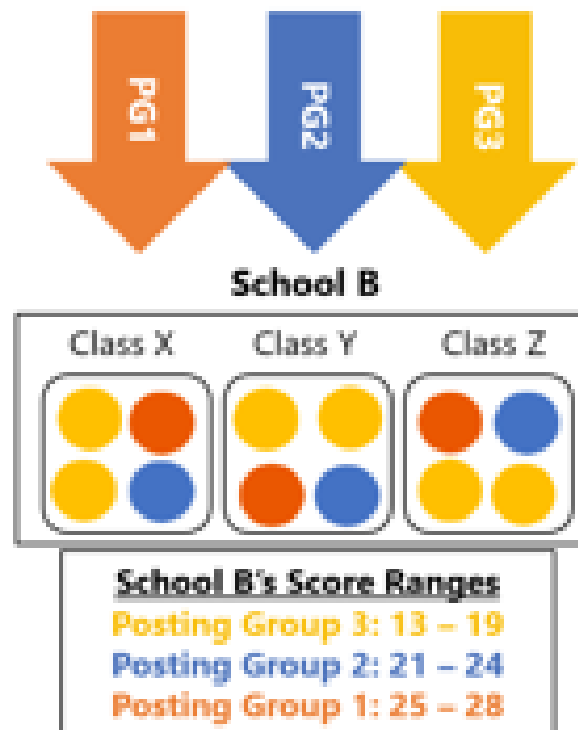
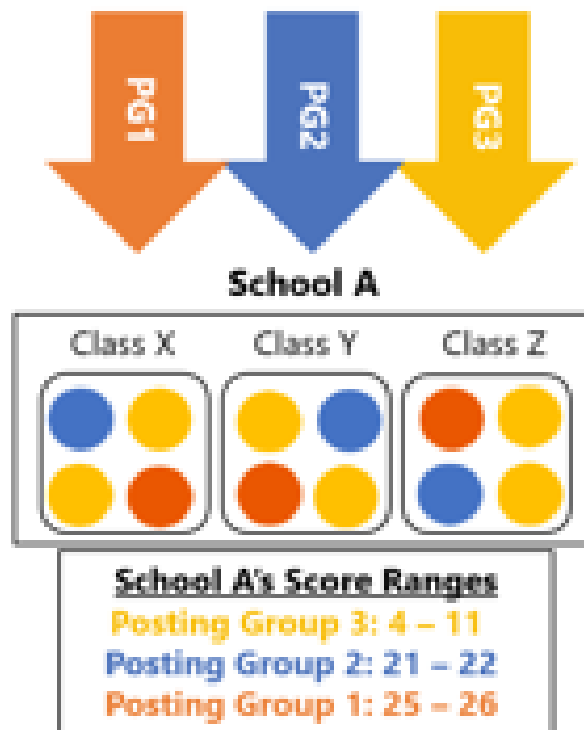
Subject Levels under Full SBB

- Students can offer different subjects at different subject levels (i.e., G1, G2 or G3) according to their **strengths, interests** and **learning needs**, throughout their secondary school journey.
- These subject levels, G1, G2 or G3, are mapped from the standards of N(T), N(A) and Express subject levels respectively.

Mixed Form Classes in Lower Secondary

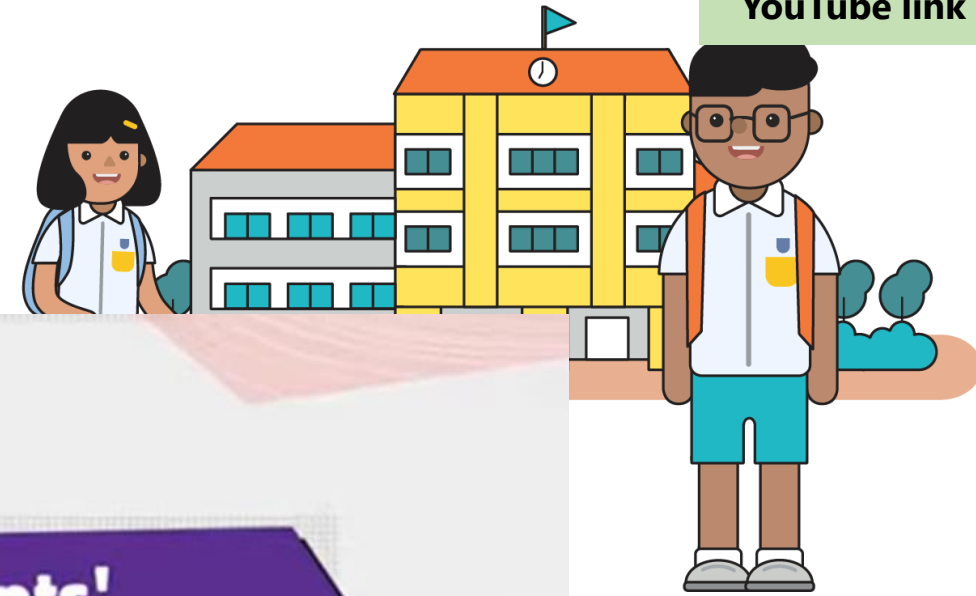
- With Full SBB, students will be placed in mixed form classes in lower secondary.
- More opportunities for students to interact with other students of different strengths.

Students of different profiles participating in Sec 1 Posting



Video: Mixed Form Classes

YouTube link



**Catering to students'
diverse strengths and
learning needs under Full SBB**

<https://go.gov.sg/ansot-mixedformclasses>

Mixed Form Classes in Lower Secondary

- Teachers observed an increase in students' interactions with peers from different streams and positive outcomes arising from these interactions.



"It was a new experience for me to stand in front of the class and lead, but I enjoyed it as my Form Teachers and classmates were very supportive.

Because everyone in the class is different, I learnt the importance of communicating with everyone respectfully. I think I have also grown to be braver and more outspoken in the process."

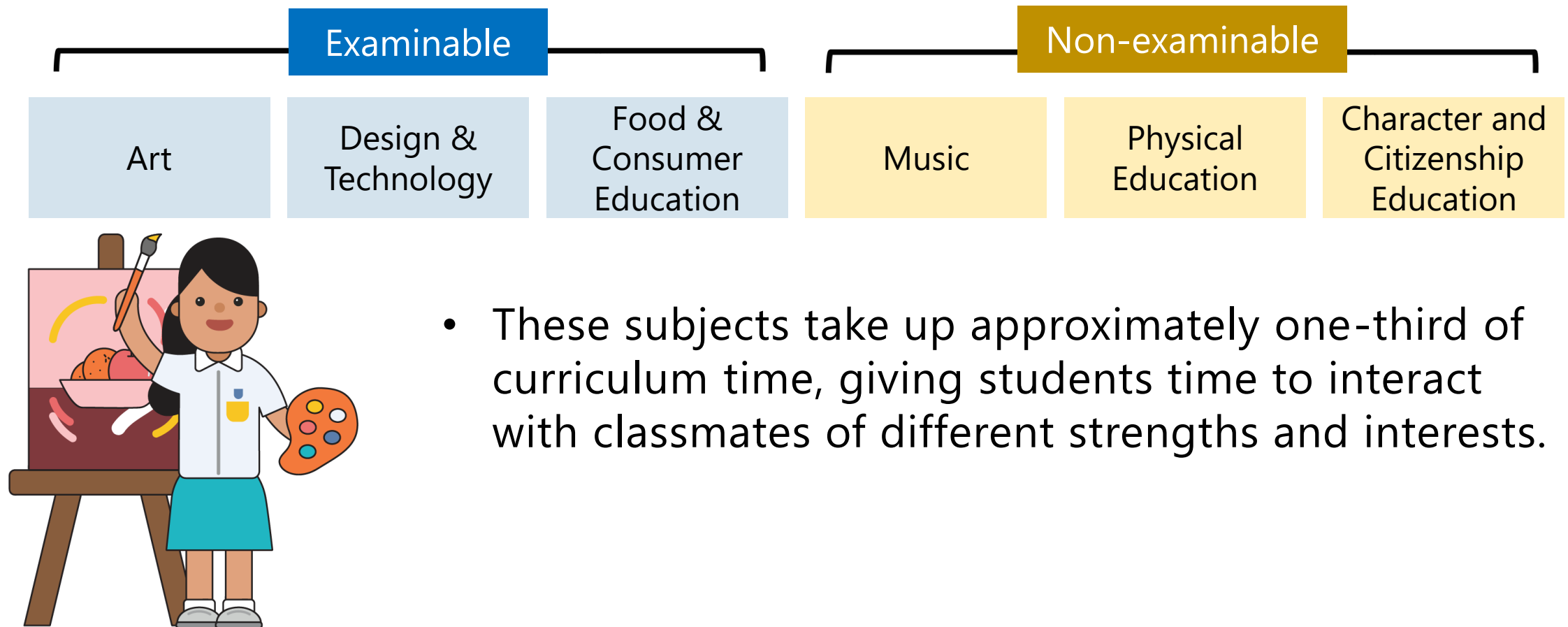
- Hazim, when he was in Sec 1



Hazim, when he was in Sec 3

Common Curriculum Subjects

- Students will take six common curriculum subjects with their form class classmates:



New Grading Scheme for Examinable Common Curriculum Subjects (from 2025)



1. For **Art, Design & Technology (D&T)** and **Food and Consumer Education (FCE)**, a new four-tier grading scheme has been derived and will be in use from 2025 across all secondary schools. The respective mark ranges are **mapped to the grade thresholds** of the quantitative placement guidelines for upper secondary Art/D&T/NFS.
2. All lower secondary students will begin to see the Grade Descriptors in their report books from **WA1 2025**.

Grade Descriptors (with abbreviations)	Mark Range
Proficient (PF)	70-100
Competent (CP)	60-69
Developing (DV)	50-59
Beginning (BG)	<50

Academic Performance

No.	Subject	Semester 1 Mark	Semester 2 Mark	Overall Mark	Overall Grade
1	ENGLISH LANGUAGE	35.00	35.00	35	E
2	MATHEMATICS	29.00	29.00	29	9
3	Design & Technology	35.00	35.00	35	CP

BG = Beginning; DV = Developing; CP = Competent; PF = Proficient

Offering Subjects at More Demanding Levels



- For **English Language, Mother Tongue Languages, Mathematics and/or Science**, students can offer them at the start of Secondary 1 at a more demanding level if they meet the eligibility criteria.

Eligibility criteria for <u>English Language, Mathematics, Science, Mother Tongue Languages</u>			
Posting Group	PSLE Standard grade	PSLE Foundation grade	Option to offer subject at
PG2	AL 5 or better	-	G3
PG1	AL 5 or better	-	G2 / G3
	AL 6	AL A	G2

Eligibility criteria for Higher Mother Tongue Languages

- An overall PSLE Score of 8 or better
or
An overall PSLE Score of 9 to 14 (inclusive);
and attain
- AL 1/AL 2 in Mother Tongue Language;
or
 - Distinction/Merit in Higher Mother Tongue Language

- Students can offer **Humanities subjects** at a more demanding level from Secondary 2 onwards, based on their results in Secondary 1.

Subject Level Flexibility Throughout Secondary Education

- Beyond the start of Secondary 1, students may adjust their subject levels across their secondary school journey.
 - E.g. Students can also offer English Language, Mathematics, Science and/or Mother Tongue Languages at a more demanding level from Secondary 1 Semester 2.

Current subject level	School-based results	Option to offer subject at
G1	≥75% in the specific subject	G2 starting from next semester
G2	≥75% in the specific subject	G3 starting from next semester

Offering Subjects at Less Demanding Levels



- Eligible students may offer some subjects at a less demanding level from Secondary 1.
- Students who offer subjects at a less demanding level may subsequently offer the subject at a more demanding level as they gain greater competence and confidence in the subject.

Offering Subjects at Less Demanding Levels

- Students can offer to take subjects at a less demanding level based on the following considerations:

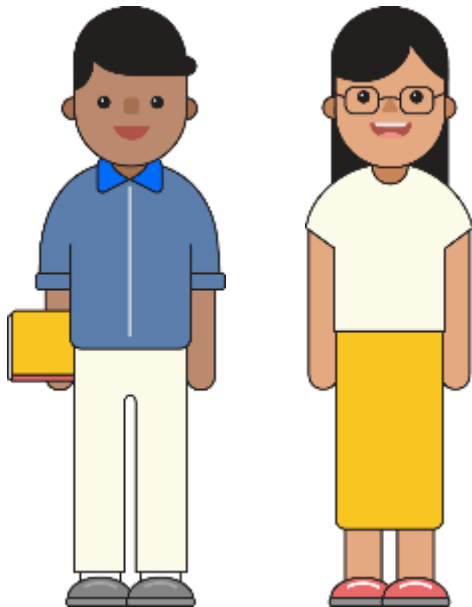
Mother Tongue Languages:

Indicative level of most subjects at start of Secondary 1	PSLE Grade (Standard Mother Tongue Language)	PSLE Grade (Foundation Mother Tongue Language)	Option to offer at
G3	AL 6	AL A	G2
	AL 7-8	AL B-C	G1 or G2
G2	AL 7-8	AL B-C	G1

English Language, Mathematics and/or Science:

Indicative level of most subjects at start of Secondary 1	PSLE subject level for English Language, Mathematics and/or Science	Option to offer at
G3	Foundation level	G2

Greater Subject Level Flexibility



"I do see that students actually blossom when they are confident and aware of their strengths. Students taking a subject at a more demanding level **no longer view themselves by their academic stream but take pride in their strengths in a particular subject.**"

Sec 1 Form Teacher

"Full SBB **provides opportunities for students** to take subjects at more demanding level and blurs the lines between the academic streams. **When they are offered to take a subject at a more demanding level, they take a lot more pride in the subject.** They may even work harder than the rest in the class."

Sec 1 Form Teacher

**Quotes from Full SBB pilot study FGD in Q3 2020. Slight edits were made for clarity and personal identifiers have been anonymised.*

Progression to Secondary 2

- All students will generally progress to Secondary 2.
 - Teachers will check in with students and parents to discuss the subjects and respective subject levels that best suit the student.
- Students can offer certain subjects at a more demanding level based on his/her interest and learning progress.



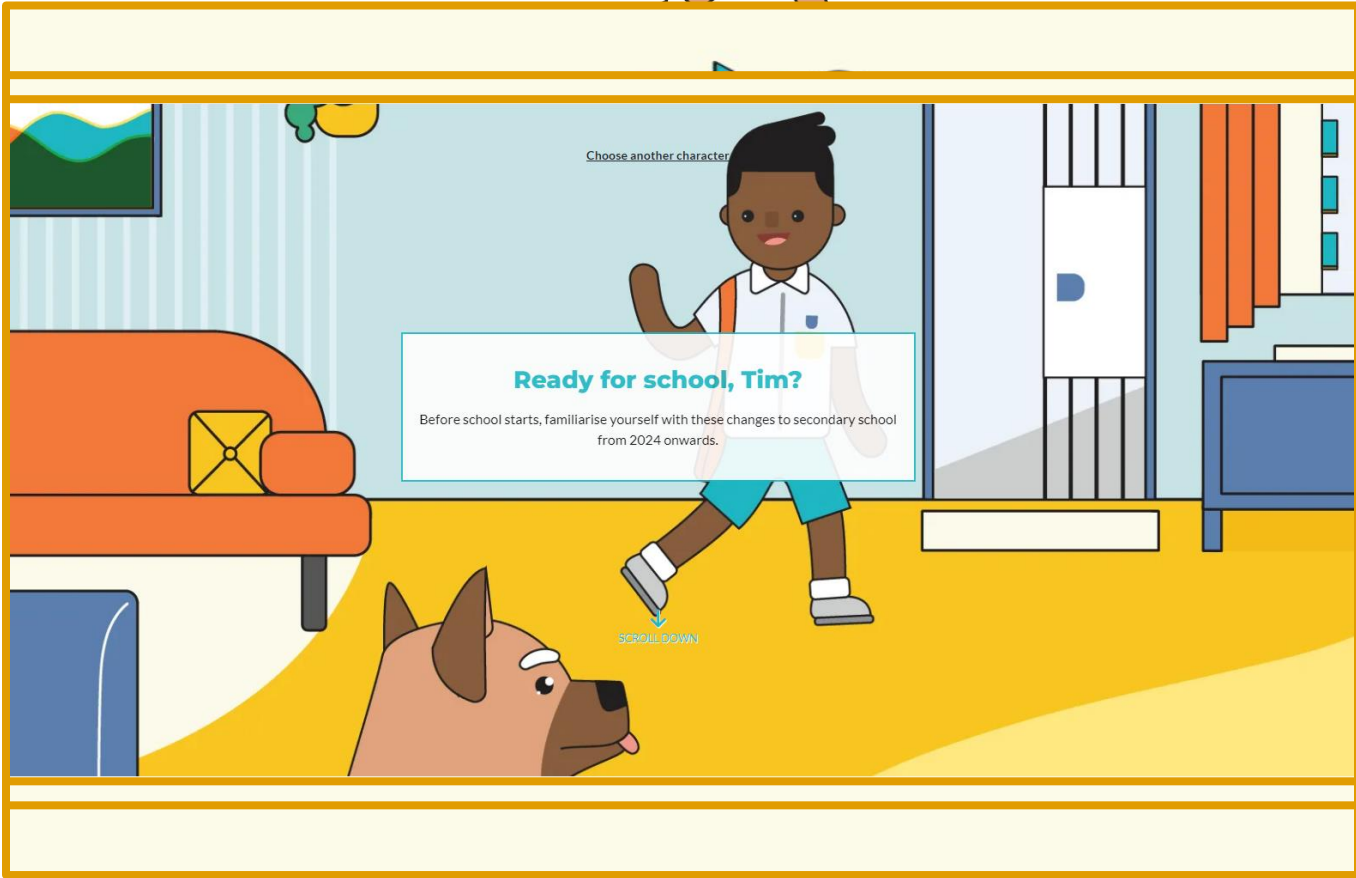
Subject Level Flexibility Throughout Secondary Education

- In upper secondary, students may offer **elective subjects** (e.g. Additional Mathematics, Art, Design & Technology) at a subject level suited to their strengths, interests and post-secondary aspirations.

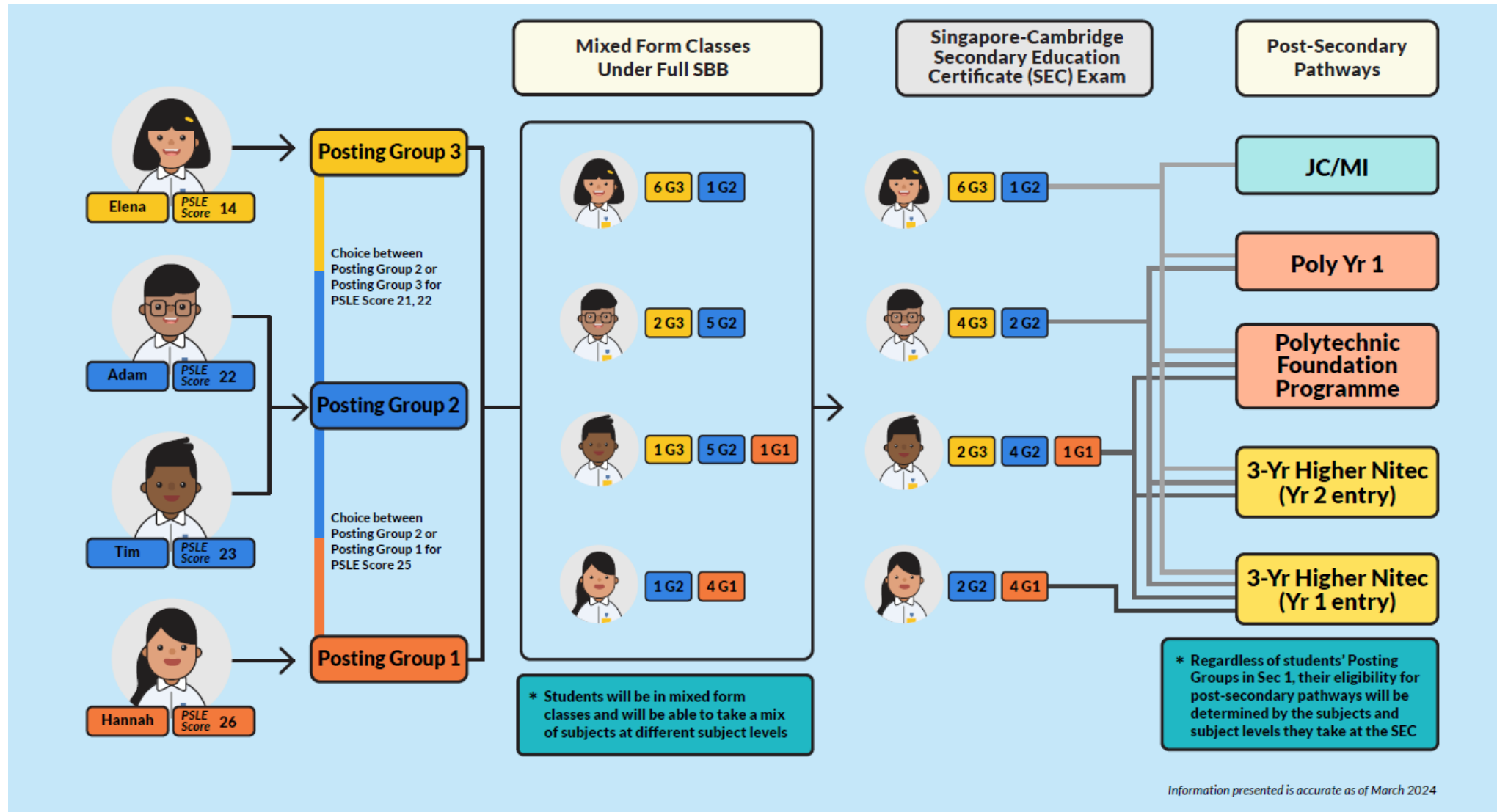
Interactive Site: Where will your path lead?

<https://go.gov.sg/my-fsbb-path>

Find out each
student's unique Full
SBB experience
through this
interactive site.
(updated Mar 2024)



Example: Secondary school experience under Full SBB





**Supporting your child through
their Secondary School Journey**

How can you support your child?

- **Learn more about their strengths, skills, interests, learning styles and aspirations.**
- **Encourage your child to be open and think about possible education and career opportunities.**
 - There are many post-secondary education options for students to explore. Find one that best suit their strengths, skills, interests and learning styles.

How can you support your child?

Support

Affirm

Familiarise

Empathise

How can you support your child?

- Here's how you can journey with your child:
 - **Connect with them**
 - Set aside time to listen and understand how they are coping with school and CCA, their thoughts and feelings.
 - Create opportunities outside of school that would help you and your child recognise their interests, skills, strengths and learning styles.
 - **Support them to learn for life**
 - Stay open to the possible education and career pathways that are available and be flexible in discussing these pathways with them.
 - Trust their abilities to grow to become better versions of themselves, while being careful not to project your expectations on them.
 - Encourage them to take ownership of their goals and plans.

Resources for Parents

Video – Heart to Heart Talk



<https://go.gov.sg/h2htep2>

ECG Tips for Parents



<https://go.gov.sg/tips-for-parents>



Find out more about Full SBB

Visit the Full SBB Microsite

<https://go.gov.sg/moe-fsbb>



What is Full SBB?

Full SBB is part of MOE's ongoing efforts to nurture the joy of learning and develop multiple pathways to cater to the different strengths and interests of our students.



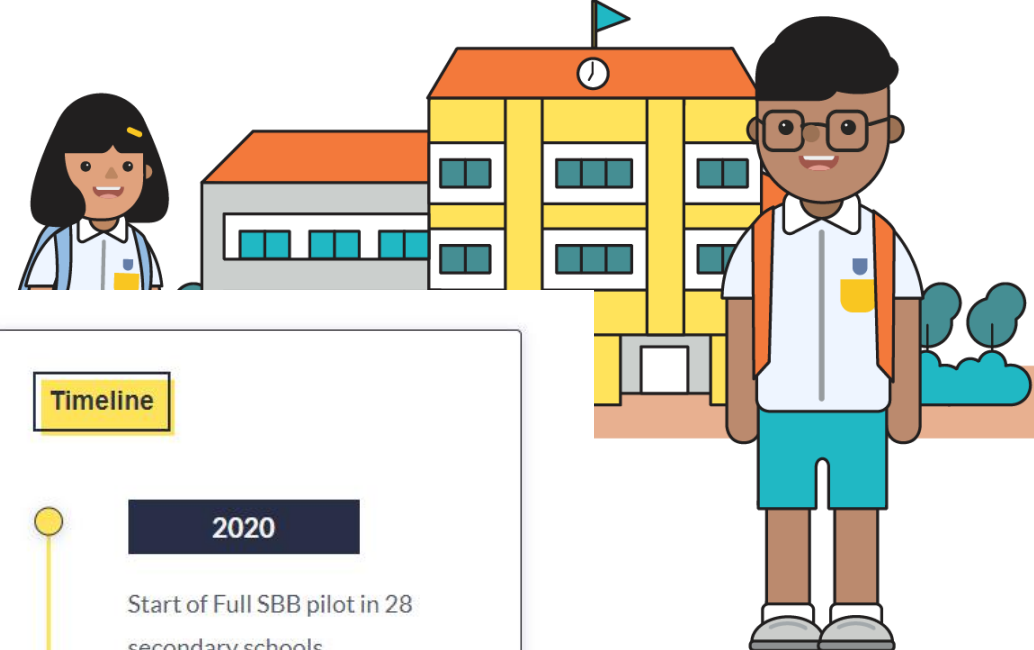
Secondary school experience under Full SBB

Find out more about Secondary 1 postings, form classes, subject offerings, Common Curriculum and other changes under Full SBB.



FAQ

Read this list of commonly asked questions and answers on Full SBB.



Timeline

2020

Start of Full SBB pilot in 28 secondary schools

2021

First cohort of Primary 6 students undergo new PSLE scoring and Secondary 1 (S1) posting system

2022-2024

Progressive roll-out of Full SBB to more secondary schools

2027

Find out more about Full SBB

Microsite



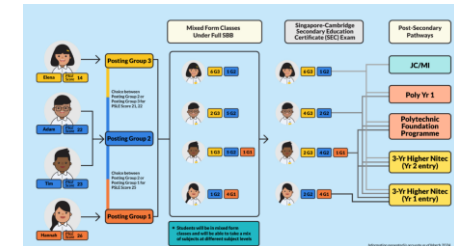
<https://go.gov.sg/moe-fsbb>

Interactive Site (updated Mar 2024)



<https://go.gov.sg/my-fsbb-path>

Infographic (updated Mar 2024)



<https://go.gov.sg/fsbb-pathways>

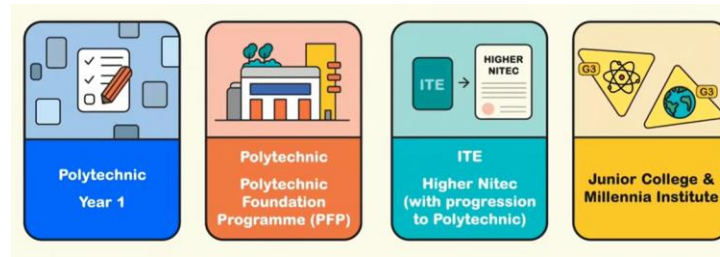
Find out more about Full SBB

MOE Explainer Video: Full SBB



<https://go.gov.sg/moe-fsbb-explainer>

MOE Explainer Video: Post-Secondary Pathways under Full SBB



<https://go.gov.sg/moe-fsbb-postsec>

CNA Documentary: Full SBB: A New School of Thought



<https://go.gov.sg/anewschooloftthought>

What's next?



Deciding on upper secondary subject combinations

All students will offer between 5 and 9 examinable subjects for upper secondary.

Upper secondary

Students will continue to have flexibility to offer subjects at different subject levels, including elective subjects.

What's next?

End of Secondary 4/5

Singapore-Cambridge Secondary Education Certificate (SEC) Examination

From 2027, students will sit for the new SEC examinations, with different papers for each subject level.

5th year of secondary education will continue to be available for eligible students.

- This allows them to pace their learning and possibly offer subjects at a more demanding level to access more post-secondary pathways.

Post-Secondary

Admission to post-secondary education institutes

Admission criteria have been progressively updated to recognise students taking different combinations of subjects and subject levels.

- E.g., Polytechnic Foundation Programme (PFP) has been expanded to allow access to students offering G3 subjects, or a mix of G2 and G3 subjects.

Overview of Post-Secondary Pathways

**From 2028,
more post-secondary options
will be available.**

Students taking at least	POST-SEC PATHWAYS					
	ITE Year 1 Entry	ITE Year 2 Entry	Polytechnic Foundation Programme (PFP)	Polytechnic Year 1	Millennia Institute	Junior College
6 G3 subjects	✓	✓	NEW ✓	✓	✓	✓
5 G3 subjects	✓	✓	NEW ✓	✓	✓	NEW ✓
4 G3 + 1 G2 subjects subject	✓	✓	NEW ✓	NEW ✓		
5 G2 subjects	✓	✓	✓			
4 G1 subjects	✓	NEW* ✓				

*For students who meet ITE's Year 1 academic requirements



FSBB Team

Mdm Magdelene Wi

Head of Department (English & Literature)

[wi kar lin magdelene@moe.edu.sg](mailto:wi_kar_lin_magdelene@moe.edu.sg)

Ms Madeleine Cheong

Head of Department (Mother Tongue Languages)

[cheong wai heng madeleine@moe.edu.sg](mailto:cheong_wai_heng_madeleine@moe.edu.sg)



Thank you