

# A Whole School Approach in Supporting Our Graduating Students

Mr. Stanley Yang  
HOD Science



**MANJUSRI**  
SECONDARY SCHOOL

文殊中學

$$\textbf{\textit{Potential}} - \textbf{\textit{Interference}} \\ = \textbf{\textit{Success}}$$

What are some of your interferences or obstacles to learning?  
How am I going to remove them?



**MANJUSRI**  
SECONDARY SCHOOL

文殊中學

4NA	MON	TUE	WED	THURS	FRI
2.30-4.30pm	Math English		Humanities Science		Mother Tongue (12.45-1.45pm)
					4N/5N POA (1.45-2.30pm)
					4E POA (2.30-3.15pm)
					D&T (2.30pm onwards)
					FNN (2.30pm onwards)
					Art (2.30pm onwards)

4E5NA	MON	TUE	WED	THURS	FRI
4Exp 3-5pm 5NA 2.30-4.30pm	English Math		Humanities Science		Mother Tongue (12.45-1.45pm)
					4N/5N POA (1.45-2.30pm)
					4E POA (2.30-3.15pm)
					D&T (2.30pm onwards)
					FNN (2.30pm onwards)
					Art (2.30pm onwards)

# SEMESTER 2



MANJUSRI  
SECONDARY SCHOOL

文殊中學

- **Curriculum Extension Programmes**
  - June Extended
  - Special Study Programmes
- Sustained Practice & Revision Time (SPRinT)
- Balancing coursework with revision

**SPR<sub>in</sub>T**



# PURPOSE OF SPRINT



MANJUSRI  
SECONDARY SCHOOL

文殊中學

- One of the school's academic programmes aimed at supporting our **graduating cohort** in their preparations for the national examinations.
- This will be offered in 3 different modes, namely,
  - **Structured Timed-Practice** with examination papers,
  - **Bite-Sized Assessments** and
  - **Consultations** with specific pull-out groups.

# PROCESS (SPRINT)



MANJUSRI  
SECONDARY SCHOOL

文殊中學

- Conducted as **Post-Prelim Activities**, replacing the remedial slots in timetable.
- **2-hour structured time** after core curricular hours for all Sec 4N/4E and Sec 5N students
  - 4N - EL, Math, Sci, Humanities, POA
  - 4E5N - EL, Math, Sci, Humanities, POA, Literature
- Students must submit **a valid letter from parents** indicating the dates they will be away for external tuition before they can be excused from the programme.



# MODES OF CONDUCT (SPRINT)



- HODs to review past year practices & proposed revised plans to suit the duration & period of conduct of SPRT.

Mode 1	Mode 2	Mode 3	Mode 4
Practice full papers	Bite-sized assessments & immediate review	Small group consultations	Review of Common Misconceptions
Reviewed during curriculum time	Selected sections of Exam paper	Groupings based on learning readiness	Lecture-based

# KEY DATES (TENTATIVE)



MANJUSRI  
SECONDARY SCHOOL

文殊中學

4N		4E5N	
4N Preliminary Examination	25 Jul – 2 Aug	4E5N Preliminary Examination	22 – 31 Aug
4N SPRinT	Aug / Sep	4E5N SPRinT	Sep
GCE 'N' Level Examination (I)	14 – 22 Sep	GCE 'O' Level Examination	3 Oct – 14 Nov
Special Study Programme Study Break	Sep / Oct		
GCE 'N' Level Examination (II)	3 Oct – 13 Oct		

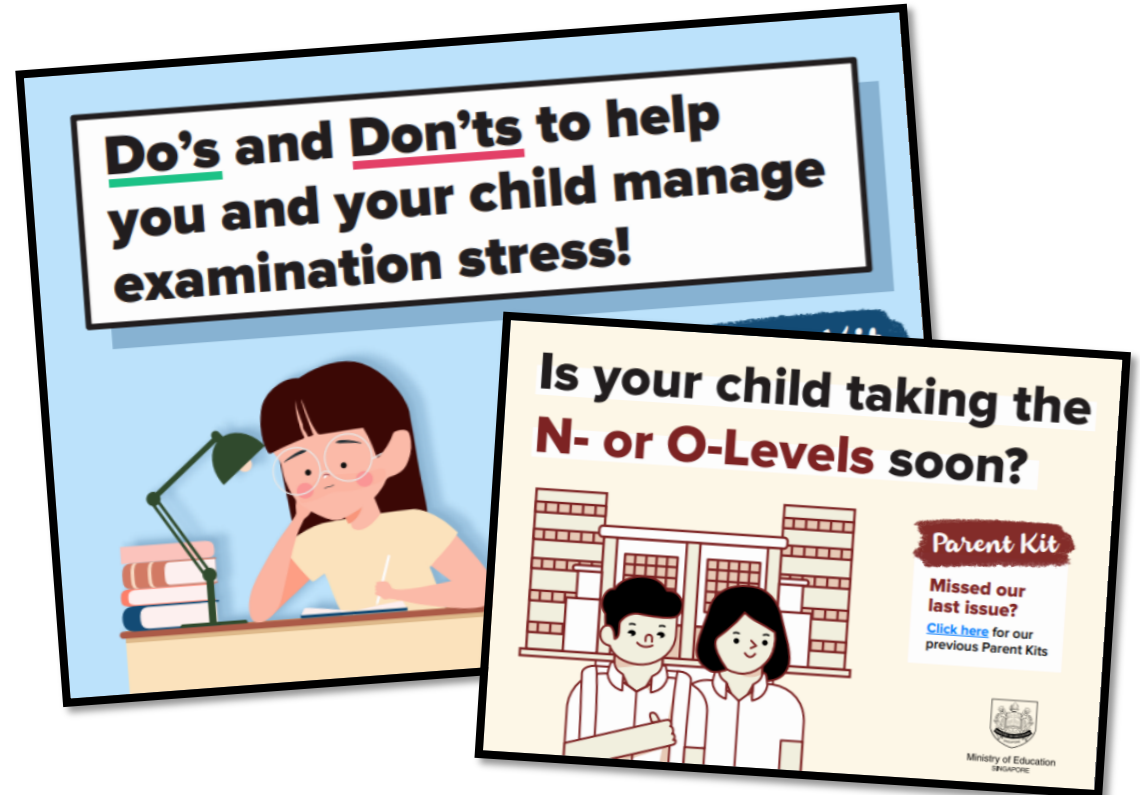
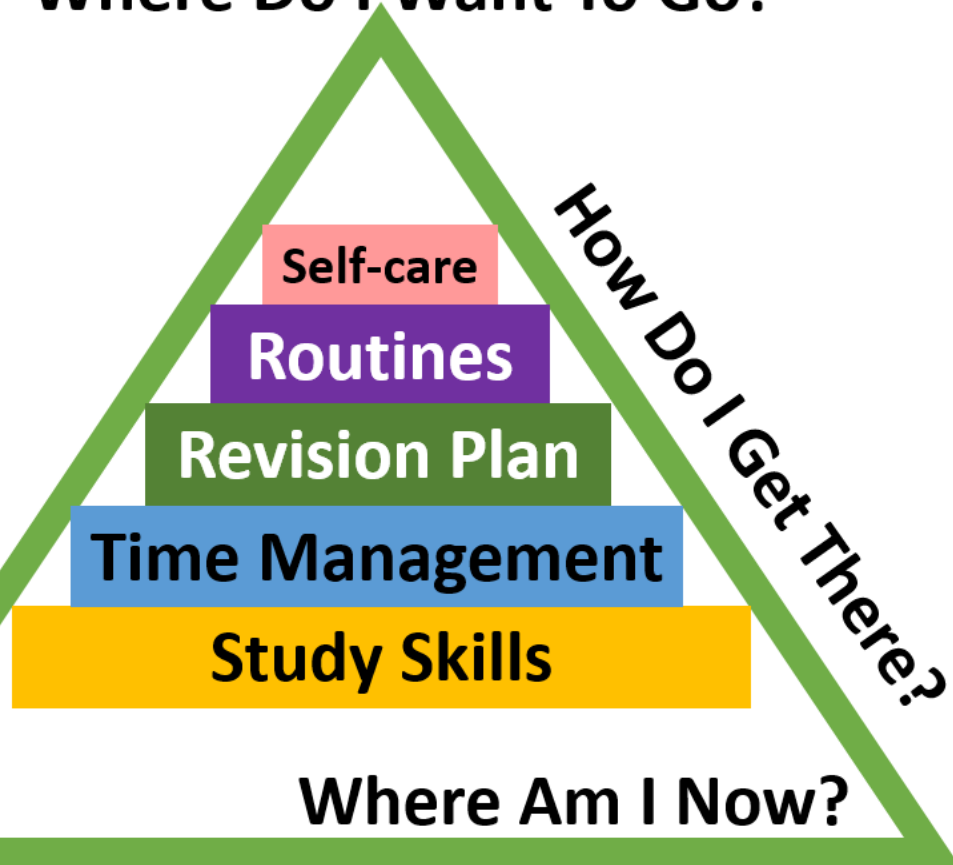
# PARTNERING THE SCHOOL



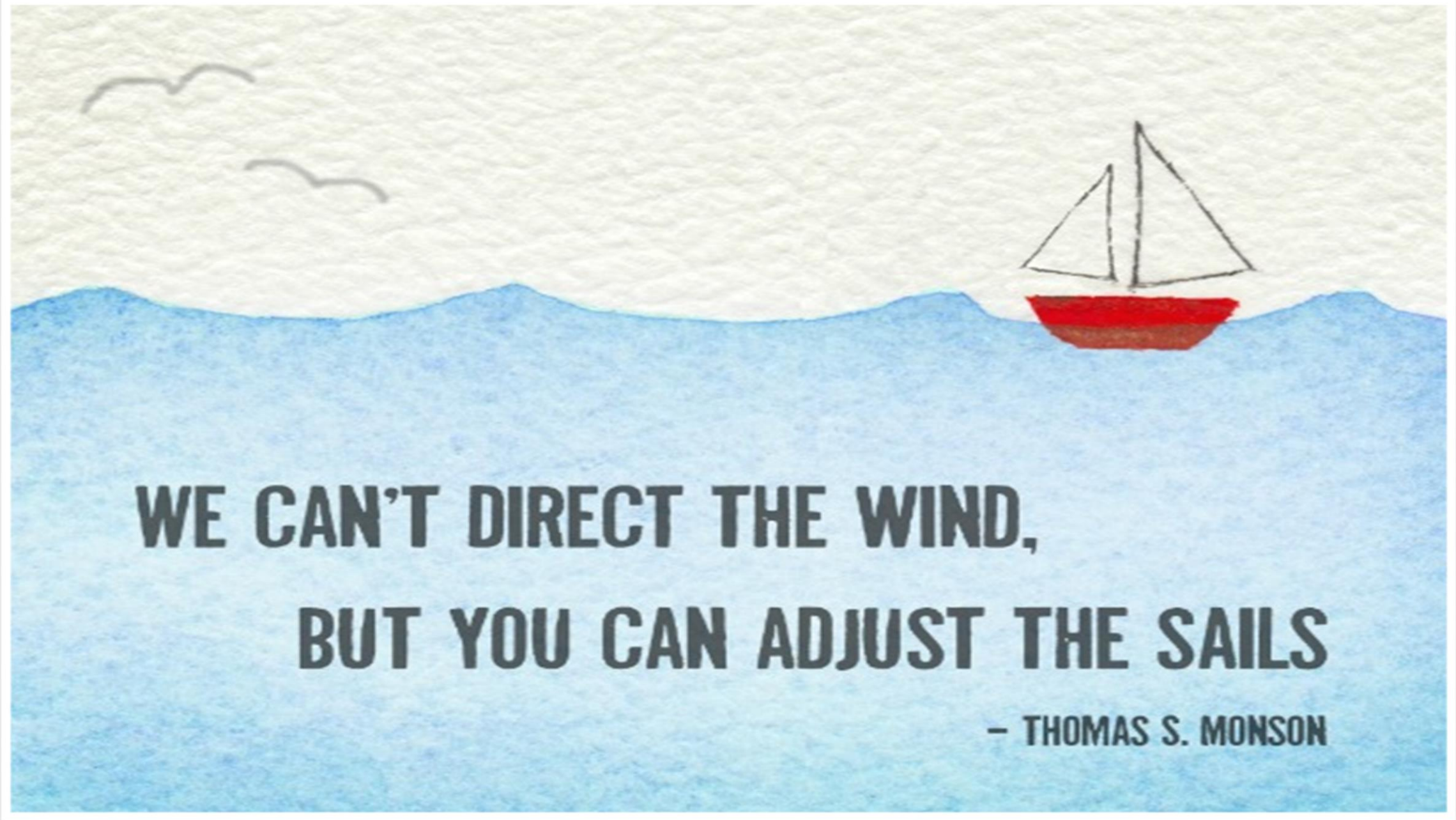
MANJUSRI  
SECONDARY SCHOOL

文殊中學

Where Do I Want To Go?



<https://www.moe.gov.sg/parentkit>



**WE CAN'T DIRECT THE WIND,  
BUT YOU CAN ADJUST THE SAILS**

**– THOMAS S. MONSON**

***Potential*** - ***Interference***  
***= Success***

***Thank you!***